

CITY OF GONZALES

GONZALES

COMMUNITY FACILITY NEEDS
ASSESSMENT STUDY

MAY 2002

*Funded by the California Department of Housing and Community Development, Community Development Block Grant
Program, Planning and Technical Assistance Allocation (00-STBG-1506)*

Connerly & Associates, Inc.

TABLE OF CONTENTS

1. EXECUTIVE SUMMARY.....	3
<i>1.1 Introduction.....</i>	<i>3</i>
<i>1.2 Findings.....</i>	<i>3</i>
<i>1.3 Summary Recommendations.....</i>	<i>3</i>
2. EXAMINATION OF SERVICE/ACTIVITY NEEDS	5
<i>2.1 Introduction.....</i>	<i>5</i>
<i>2.2 Services, Activities and Facilities Available in Gonzales.....</i>	<i>5</i>
<i>2.3 Services, Activities and Facilities Unavailable in Gonzales</i>	<i>9</i>
<i>2.4 Task Force Committee Meeting.....</i>	<i>12</i>
3. EXAMINATION OF SPACE AND AMENITY NEEDS FOR IDENTIFIED SERVICES.....	14
<i>3.1 General.....</i>	<i>14</i>
<i>3.2 Specific.....</i>	<i>15</i>
4. PRELIMINARY SITE SELECTION AND DESIGN.....	16
<i>4.1 General Considerations.....</i>	<i>16</i>
<i>4.2 Property Profiles and Analysis.....</i>	<i>16</i>
<i>4.3 Three-Year Operation and Maintenance Budget.....</i>	<i>24</i>
5. ANALYSIS OF POTENTIAL FUNDING SOURCES.....	27
<i>5.1 Background.....</i>	<i>27</i>
<i>5.2 Private Funding Sources.....</i>	<i>29</i>
<i>5.3 Federal and State Sources.....</i>	<i>61</i>
<i>5.4 Recommendations</i>	<i>65</i>
6. APPENDICES.....	67
<i>APPENDIX A:.....</i>	<i>Preliminary Design Plan</i>
<i>APPENDIX B:.....</i>	<i>Cost Estimate</i>
<i>APPENDIX C:.....</i>	<i>Photos of Existing Community Center</i>
<i>APPENDIX D:.....</i>	<i>List of Sources</i>

1. EXECUTIVE SUMMARY

1.1 Introduction

In March of 2001, Connerly & Associates, Inc. was retained by the City of Gonzales to conduct a Community Facility Needs Assessment Study. The firm examined the current and projected service and activity needs/demands (potential uses), the space and amenity needs of the service/activity needs identified, potential construction sites, preliminary design, construction and operation/maintenance costs, and funding alternatives. The research was conducted from May 2001 through November 2001 by our planners using the scope of work identified in the City's Community Development Block Grant (CDBG) Planning & Technical Assistance Grant (00-STBG-1506). In September 2001, Connerly & Associates' staff met with members of the Task Force Committee, comprised of members from the Gonzales community, to discuss ideas regarding preliminary plans for a Community Facility. SSA Landscape Architects, Inc. of Santa Cruz was retained to provide the preliminary design plan and cost estimate. Information discussed during this meeting has been incorporated into this study.

1.2 Findings

The City of Gonzales suffers from a severe shortage of meeting space and space for social and recreational activities for residents of all ages. The current lack of meeting facilities has created an absence of local children's, youth, senior and general family programs/activities or hindered further development of such programs. The City currently maintains a small community center located at 117 Fourth Street, but it is very limited in size and services offered. The facility is approximately 2,000 square feet, and contains a small kitchen and limited storage space. The facility is owned by the City. The Community Center is reserved for the Senior Program, operated by the City of Gonzales, and seasonal programs offered by the Recreation Department. Gonzales needs a multi-purpose community facility to accommodate its rapidly growing population. The City lacks adequate facilities in the areas of social services, health, education, childcare, senior service, and recreation. The adverse social, economic, and other quality of life implications of this fact are numerous. To date, the public sector alone has been unable to satisfy this need.

1.3 Summary Recommendations

Based on the research and data collected for this study, it is recommended that the City of Gonzales aggressively pursue funding to construct a multi-purpose community facility. Specifications for an adequate size to accommodate the City's current needs and population are located in Section 4 of this study. Construction of the facility will require funding from public and private sources, as public funds would not sufficiently cover the entire cost of construction. The City should prepare an application to the State of California's CDBG Program. Community facilities are an eligible activity under the General Allocation component. Applications are normally due in April of each year. In addition, the City should pursue funding from at least one private grant making foundation, like the S.H. Cowell Foundation or the Kresge Foundation (please see *Section 5.4* of for a more detailed description). A complete list and description of private and public sources is provided in Section 5 of this document.

The site located near Gloria Road and Harold Parkway, would be most suitable for a new facility. City has designated adjacent sites for the construction of a new school and library. The site could accommodate future expansion and provides adequate space for parking. In addition, a community facility would be consistent in the area, with proximity to the new school and library. There is no immediate infrastructure, however should the City proceed with plans to build a new school and library, infrastructure for the site would be available. Visibility from Highway 101 is good. Although this may not provide an immediate benefit to Gonzales residents, a well-designed facility could serve as an identifiable marker for the City in addition to its water tower. Currently there is no street access to the site. This too will be addressed when the school and library are constructed. Transportation to this site may be problematic for residents who live near Gonzales' downtown area where the current community center is located, however, this would balance the number of public facilities available to residents living near the City's historically downtown core and residents living in the newer housing developments.

2. EXAMINATION OF SERVICE/ACTIVITY NEEDS

2.1 Introduction

The City of Gonzales is a rapidly growing community of 7,525 people.¹ Located in Monterey County, in the heart of the Salinas Valley, the City has been primarily known for its agricultural output, with more than 40 percent of its employed persons working in the agricultural or a related industry. Since its incorporation in 1947, the City continued to grow steadily and in recent years has experienced a rapid population growth. Gonzales continues to be one of the fastest growing cities in Monterey County, a trend especially noticeable within the last ten years. According to the U.S. Census Bureau between 1990 and 2000, Gonzales' population increased by 61.5 percent (4, 660 to 7,525) while the County's population increased by only 13 percent. Rapid residential development continues to occur, particularly east of Highway 101.

Despite the rapid population growth, there remains a lack of sufficient resources to accommodate the growing population. The City remains slightly isolated from its neighboring communities and with many small communities is problematic for residents who must travel to the nearby towns of Soledad, King City, Greenfield, Chualar or Salinas to obtain services unavailable in Gonzales. The City currently operates a small multi-purpose facility (community center), located behind the City Council Chambers. The facility is approximately 2,000 square feet, and contains a small kitchen and limited storage area. The space is available for rent and general use however, only a few organizations hold meetings at the site. Photographs of this facility are located in Appendix C of this study.

Gonzales continues to attract more families, especially young, with its new housing stock and affordable prices. It provides a good location for those residents commuting to San Jose, Salinas, and the Monterey Peninsula daily.

2.2 Services, Activities and Facilities Available in Gonzales

2.2.1 Education

Created in 1997 by the merger of Gonzales Union Elementary School District and Gonzales Union High School District, the Gonzales Unified School District provides for the educational needs of students in grades K-12. It is comprised of the following three schools:

- La Gloria Elementary (K-4)
- Fairview Middle School (5-8)
- Gonzales Union High School (9-12).

Enrollment at the elementary and middle schools has continually increased in the past four years (Enrollment at the high school decreased however, due to the opening of "Soledad" High School in 1998. Prior to 1998 Gonzales Union High School received students from nearby Soledad,

¹ *United States Census Data, 2000.* During research for this study, only selected data was available from the 2000 Census. 1990 Census data is incorporated wherever 2000 data was unavailable.

Chualar and Mission School Districts.) The district is currently in negotiations to build a new middle school.

2.2.2 Childcare/Daycare

The Gonzales Child Development Center at 225 Elko is a private nonprofit Title V educational pre-school. It currently services 32 children (24-three to five year olds and 8-two year olds). The Center has six full-time staff, with hours of operation between 7:30 A.M. and 5:30 P.M., Monday through Friday. Each child is served a hot breakfast, hot lunch, and an afternoon supplement. A state subsidy is available for eligible low-income families. It is one of eight centers located in Monterey County run by Children's Services International, a private nonprofit organization. Funding for the Center comes from both public and private sources.

The Gonzales Head Start Center is located at 550 Fifth Street, and currently accommodates 40 children. Head-Start is a national program established by the Head Start Act (Section 635 of Public Law 97-35, the Omnibus Budget Reconciliation Act of 1981(42 U.S.C. 9831 *et seq.*) It provides comprehensive development services, primarily to eligible low-income children, ages three to five. The Center operates a double session between August and May, with a morning session from 8:30 A.M. to 12:00 P.M. and an afternoon session from 12:00 P.M. and 3:30 P.M. There is a maximum enrollment of 20 children per session. The Gonzales Head Start Center has five employees, consisting of four full-time and one-part time staff.

In addition to the two major childcare providers mentioned above, there are several licensed private day care providers in Gonzales. Hours of operation and maximum number of children enrolled vary.

2.2.3 Senior Citizens

The City currently provides the following programs for Senior Citizens:

- *Senior Lunch Program* – Meals are offered Monday through Friday between 9:30 A.M. and 12:30 P.M. Daily attendance varies between 15 and 20 people.
- *Senior Trips* – Monthly trips are offered once a month with destinations determined by the Seniors.

Transportation is provided to and from the facility, including trips to the library or local businesses.

2.2.4 Health Care/Emergency Services

There are currently two medical clinics located in Gonzales. The Gonzales Medical Group is located at 133 Fourth Street, and Alta Medical Clinic located at 132 Alta Street. The Alta Medical Clinic also provides urgent care. Ambulance services are provided by American Medical Responders (AMR).

2.2.5 Recreation

Gonzales has three public parks: Central Park, Centennial Park, and Meyer Park. Central Park is the most frequently utilized park and features a playground and a picnic area. Centennial Park, where the Gonzales Little League meets, has two playing fields and a picnic area. Meyer Park has a soccer field, playground, basketball courts and a picnic area.

The City's Parks and Recreation Department offers several programs for children, youth, and teens. The City owned pool, Centennial Swimming Pool, an Olympic sized pool, is open to the public from June to September. Recreational swimming, lessons and a competitive swim team are available to the public. In addition, the Parks and Recreation Department offers several youth recreational programs including Youth Soccer, Youth Basketball, Teen Hoops, Flag Football, Karate, and Tumbling.

The City also has a Recreation Commission who advises and makes recommendations to the City Council regarding the community's recreational needs and programs.

2.2.6 Clubs and Associations

Among the clubs and associations located in Gonzales, only the American Legion and Auxiliary has its own building. The American Legion and Auxiliary convenes at the American Legion Hall. There are various clubs and associations in Gonzales, most of whom do not have their own facilities and meet at the following locations:

- 4-H Club - La Gloria Elementary Cafeteria
- IOOF -City Council Chambers,
- American Legion and Auxiliary - American Legion Hall
- Boy Scouts of America – City Council Chambers
- Cub Scouts of America – American Legion Hall
- Monterey Bay Girl Scouts/Brownies – Trinity Episcopal Hall
- Future Farmers of America – Gonzales High School
- Gonzales Booster Club – Golden Gate Restaurant
- Chamber of Commerce - Golden Gate Restaurant
- Gonzales Historic Preservation Commission - City Council Chambers
- Gonzales Little League – Gonzales Community Center/Centennial Park
- Gonzales Unified School District – Gonzales High School Library
- Lions Club- Community Bank
- Rotary Club-City Council Chambers

2.2.7 Churches

There are four churches in Gonzales including the Gonzales Community Presbyterian Church at the corner of Fourth and Day Streets, Trinity Episcopal Church located on 405 Seventh Street, Apostolic Church on 801 Center Street, and St. Theodore's Catholic Church on 116 Belden

Street. St. Theodore's Church is named after the founder of the City, Teodoro Gonzales, and the Gonzales Community Presbyterian Church is placed on the National Register of Historic Places.

2.2.8 Tourist Attractions

The City is home to several wineries that are primarily enjoyed by visitors and travelers from Highway 101. The Blackstone Vineyard, located at 800 South Alta offers a wine tasting room, visitor center, photo gallery and picnic grounds. There are also the Salinas Valley Vineyard at Camphora Gloria Rd. and Talbott Robert Vineyards at 1380 River Rd. Vintners International Co. Inc. at 800 S. Alta, located on the same grounds as the Monterey Vineyard, produces wines under the labels of Paul Masson and Taylor California Cellars. Riverland Vineyards features daily wine tasting and tours of its Gonzales facility. The winery is the site of a 70-acre facility, which houses crushing, winemaking, and contract bottling operations and is one of the City's largest employers.

2.2.9 Transportation

The Monterey-Salinas Transit (MST) operates a Gonzales route, with four scheduled stops Monday through Saturday at Belden & Fourth Street and the Gonzales Shopping Center. This provides access to the downtown and main shopping area and also includes a stop at the Salinas Transit Center in Salinas. MST RIDES ADA provides transportation services for people with disabilities and offers a "fixed route" bus service, operating daily. Arrangement for this service must be made in advance. MST and MST RIDES ADA provide services year round, excluding several major holidays.

2.3 Services, Activities, Facilities Unavailable in Gonzales

2.3.1 Education

Enrollment at the elementary and middle schools has continually increased in the past four years (Enrollment at the high school decreased however, due to the opening of "Soledad" High School in 1998. Prior to 1998, Gonzales Union High School received students from nearby Soledad, Chualar and Mission School Districts.) Current facilities are outdated and in need of modernization; one-third of the high school needs improvements and the middle school will undergo renovation to replace portables. Since 1997, the school district has added 16 portable classrooms to La Gloria Elementary to accommodate growth. Negotiations to buy land for a new middle school are also currently in progress.

Gonzales does not offer any college, adult, continuing education programs, professional certification, vocational education, or university extension programs. Residents must travel to Salinas, approximately 15 miles away, for the nearest educational/vocational program. The makeup of the current population suggests such programs would be beneficial to the City. For example, Gonzales has an extremely large Hispanic/Latino population. The Latino population makes up 86 percent of the population, compared to only 47 percent for Monterey County. According to 1990 Census Data, approximately 20 percent of the population (18 and over) claimed to speak English "not well" or "not well at all" compared to only 11 percent for Monterey County. Residents wishing to improve and/or learn English could take advantage of a class offered at the community facility.

The relative absence of adult educational opportunities and facilities is particularly significant once again, considering the 1990 Census: Over 47 percent of persons 25 and over received less than a 9th grade education. Approximately 64 percent of persons 25 and over received some high school education (9th to 12th grade) but did not obtain a diploma. These numbers are significantly higher compared to Monterey County where only 16 percent of persons 25 and over received less than a 9th grade education and approximately 27 percent of persons 25 and over some high school education but did not obtain a diploma. While the 2000 Census Data may reflect some changes, it is unlikely these numbers will have decreased dramatically. In light of this data, greater educational opportunities for adults would be beneficial to the community.

2.3.2 Childcare/Daycare

There is a shortage of affordable childcare/daycare services. The largest childcare/daycare providers are the Gonzales Child Development Center run by Children Services International and the Gonzales Head Start Center. Maximum enrollments are 32 and 40 children, respectively. Both centers receive numerous inquiries and maintain waiting lists year-round. There are several private childcare providers, however the City's rapid population growth has caused an increase in demand for these services. Between 1990 and 2000, Gonzales experienced a 62 percent population growth, compared to only 13 percent for the entire County.

Female householders with no husband present have increased between 1990 and 2000 from 11 to 14.2 percent. Gonzales has had a higher incidence of female heads of household than Monterey

County where only 11.6 percent of all households in the County are characterized as female householders. In 1990, 85 percent of the children living in these households were considered living below poverty level. Daycare needs are especially critical for single working mothers.

Gonzales still has unmet childcare needs for its low-income families and will likely experience unmet childcare needs in the future. Factors that will affect future childcare needs include general population growth, the percentage of families with minor children, and changes in public policy which require more parents to work outside the home without adult supervision for their children. This will require expansion of current facilities and/or additional childcare programs. Expansion of such facilities would be consistent with the City's General Plan which recommends an emphasis on the provision of day care services for young children.

2.3.3 Senior Citizens

Seniors (ages 65 and over) comprise 5.7 percent of Gonzales' total population. While this number is lower than the County (only 10 percent of Monterey County's population is 65 and older), there remain limited services available for seniors living in Gonzales. Casa de Oro, located at 48 C Street, is a publicly assisted housing complex, owned and operated by the Monterey County Housing Authority. Casa de Oro has 20 housing units for seniors, which are all currently occupied. While this housing complex fulfills immediate senior housing needs, the City's General Plan addresses the long-term need for additional units. In addition, there are no residential or long-term care facilities for seniors.

The City operates the Senior Center and programs, normally between the hours of 9:30 A.M. to 12:30 P.M., Monday through Friday at the Gonzales Community Center. The program provides meals and arranges activities such as fieldtrips.

Additional services should be made available to seniors. The Recreational Needs Survey conducted in 1998 revealed that 21 percent of all respondents believed additional senior programs were necessary. It should be noted that the need expressed in the survey is high relative to actual percentage of seniors residing in the City.

2.3.4 Youth/Recreation Programs

Gonzales is distinctly characterized by its relatively large youth population. Approximately 69 percent (68.6) of households in Gonzales all have individuals under 18 years of age. This is higher than the County percentage, which reveals only 43.5 percent of households having individuals under the age of 18. In recent years, younger families have been moving into the City thus contributing to a 32 percent population that is 14 years old and younger. Only 24 percent of the County's population makes up this age group. In addition, the median age in Gonzales is 24.5 compared to the County's median age of 31.7. The higher percentage of children and youth in Gonzales is significant in addressing future recreational needs of the City.

The City's Parks and Recreation Department currently offers several programs/activities during the year. In addition, the City's Recreation Commission advises and makes recommendations to the City Council regarding the City's recreational policies. In the Recreational Needs Survey

conducted in 1998, 25 percent of respondents expressed a need for children's programs and 26 percent expressed a need for young adult programs. The City's Parks and Recreation Department offers several programs/activities during the year, however the current absence of an adequate community facility prohibits growth or expansion of existing services. The short-term and long-term benefits of participation in sports, group or extracurricular activities for children, are numerous and widely accepted as critical to child and adolescent development. For a City with an overwhelmingly large youth population, adequate recreational and community programs are not only a benefit but also a necessity.

2.3.5 Social/General Recreation

There is a noticeable absence of social and recreational facilities in Gonzales. There are no theaters, banquet and convention halls, athletic clubs/fitness centers, youth facilities, or general family entertainment centers. Residents must go to Salinas or Soledad to take advantage of most of these services. In a Recreational Needs Survey conducted in 1998, residents were asked to identify the City's greatest recreational needs. More than half, 52 percent of those surveyed, believed a new recreational center/facility was necessary and 19 percent expressed a need for a stage area. Besides the general need for a new facility, a multi-purpose room with a stage area for local music, dance, or drama productions would greatly benefit the City.

2.3.6 Social/Healthcare/Family Services

There are no known social or family services available within the City of Gonzales. Gonzales has a very high poverty rate, 25.2%, compared to only 11% for Monterey County; the lack of adequate social, family and health services is significant considering this statistic. Gonzales Medical Group and Alta Medical Clinic provide some medical services, however services are limited and the nearest full service hospitals are located in Salinas and King City. There are countless public and private community health services that could be provided at a new community facility. The facility could provide suitable space for community-wide flu-shots, blood drives, blood pressure checks, diabetes education and other activities that the existing medical clinics do not have time or staff to provide. Events like health fairs with screening for diabetes and cholesterol and blood testing for children could be conducted two or three times a year by volunteers. In addition, a community facility, at minimum, could rent out or provide space for County social service agencies to operate programs on behalf of the City. These services could include monthly meetings for general health education, alcohol and drug rehabilitation, and family counseling services.

A family resource center located in a new community facility and offering a hub of services would satisfy many of these unmet needs. It is likely that Gonzales' population will continue to grow at its current rate, as new housing is still under construction and workers employed in major employment centers nearby continue to find the City's housing prices very affordable. The availability and accessibility of adequate social, health, and family services becomes essential to the development and well being of the City and its residents.

2.3.7 General Meeting Space

Among the various clubs and organizations in Gonzales, only the American Legion and Auxiliary has its own building. Of the limited meeting space available at the local schools and churches, the space is generally reserved for school or church functions. The remaining clubs and organizations meet at City Council Chambers, restaurants or any space that is available (refer to Section 2.2.5 for a full listing of clubs, organizations and available meeting places). There is a severe shortage of adequate meeting space for all activities, including general meeting and recreational space.

2.4 Task Force Committee Meeting

On September 5 2001, representatives of Connerly & Associates, Inc. and SSA Landscape Architects, Inc. met with members of the task force committee to identify and discuss the social and recreational needs to be addressed by the construction of a community facility. The special task force committee was comprised of members from the City Council, Recreation Commission, and residents of the City. The purpose of this meeting was to discuss preliminary plans for the construction of a community facility. This included a discussion of service/activity needs currently available and unavailable in the City, a discussion of space and amenity requirements based on said needs, and a preliminary selection of a site.

The service/activity needs that were identified and subsequent discussion of space and amenity requirements based on said needs, included the following suggestions:

- Multi-purpose room (to be utilized by various community groups)
- Area for childcare services (drop-in and extended care)
- Area for recreation programs (children, teens, and adults)
- Media/game room
- Dance/fitness area
- Reception area (lobby area)
- Chamber office
- Classrooms
- Serving size kitchen
- Emergency shelter and food closet²

Ideas for external uses and design of the facility included a skateboard park and a covered patio area.

Four potential sites were evaluated and rated based on location, access, surrounding services, and space accommodation. At the conclusion of this discussion, the task force committee voted on two preferred sites for location of the Community Facility: **Fanoe & Fifth Street (Site #3)** and

² For the purposes of summary and preliminary design plans, this list represents a consolidation of the many ideas and suggestions mentioned during the meeting.

New School Site/Gloria Road Area (Site #4). The “pros” and “cons” listed for each site were incorporated in the property analysis located in *Section 4.2* of this report.

3. EXAMINATION OF SPACE AND AMENITY NEEDS FOR IDENTIFIED SERVICES

3.1 General

The City's greatest need is for a general-use, multi-purpose facility with meeting rooms/classrooms, multi-purpose room, auditorium/performance room, and a(n) area(s) to operate recreational programs. For a community the size of Gonzales and the space/amenity needs identified by the task force committee, a facility of approximately 20,000 square feet should be sufficient to accommodate these purposes. The facility should be designed to allow room for expansion, should the City identify future needs.

Carrying Capacity: Excluding the space necessary for restrooms, a kitchen area, storage, and other uses, such a facility could hold between 800 and 1,800 persons per event, depending on the exact building code requirements for assembly areas of a concentrated or less concentrated nature. These standards are measured in persons per square foot.

Entries and Exits : At least two points of egress would be required.

Parking: One space for each four seats in the club principal assembly area or room, or one space for each 40 square feet in the principal assembly area or room, if fixed seats are not provided, is required by the City's Zoning Ordinance. In case two or more buildings or uses occupy the same lot, the required number of parking spaces shall be the sum of the requirements of the various buildings or uses computed separately. The Planning Commission may allow a reduction of up to 15 percent of the spaces required where several uses have a common parking area, and the timing or sporadic nature of anticipated parking makes the full requirement necessary. In addition, at least one loading space will be required. Off-street parking requirements shall be established by the Planning Commission and included as a condition of use permit or building permit approval.

Landscaping: Shade trees shall be planted in the parking lot at a ratio of one tree for every four spaces. Trees shall be dispersed on a generally equal basis throughout the parking lot to maximize the shading effect on the parking stalls. A parking space shall not be more than fifty feet from a shade tree. The minimum size of each tree to be planted shall be a fifteen-gallon size.

Outdoor Activity Area: Any outdoor activity area should include an open secure fence around the area, climb/jump/swing equipment, a hardscape for bikes and play, shade, and a sandlot. It should be open with good visibility from the building.

Other Considerations:

- The interior design should be without fixed seats to provide flexibility for multiple uses, scheduling, and event set-up.
- The exterior façade should be consistent with the architectural styles that currently exist within the City of Gonzales and the neighborhood where the facility is to be located.

- The building should be single story and have and designed to maximize natural light.
- Adequate kitchen and food storage areas should be provided. A warming kitchen should be adequate for general use purposes.
- General storage space should be included in the design.
- The facility should be designed to accommodate future expansion.

3.2 Specific Needs

Certain uses, such as childcare services, will require very specific space requirements. For instance, the Head Start Program requires 35 square feet per child. A classroom designed for 24 children would need to be 900 square feet. After any special uses have been determined by the City, and regular events and/or tenants have been identified, a professional engineer or architect should prepare working design/construction plans. Said plans should be based on these uses and the information and preliminary design sketches contained in this assessment. A comprehensive code review of these plans should be performed by professional plan-checkers or the City's Building Department.

4. PRELIMINARY SITE SELECTION AND DESIGN

4.1 General Considerations

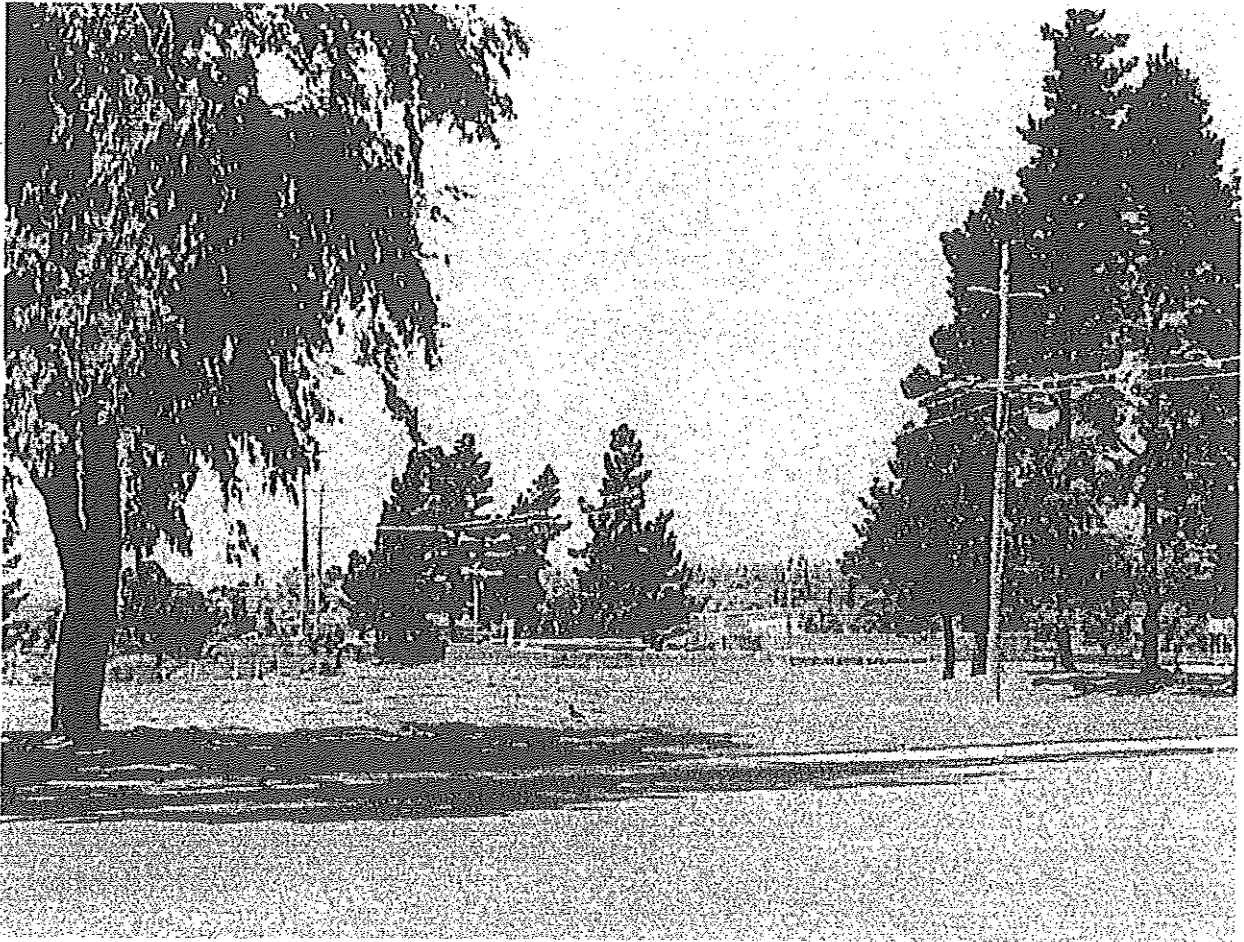
The ideal site will require few site preparations to accommodate the facility. It should be zoned appropriately, be located outside of designated flood-hazard areas, be close to schools and residential neighborhoods, and should provide a positive contribution to beautification of the neighborhood in which it is located. Site soils should be stable. The site should not result in the loss of lands zoned for permanent agriculture use nor should it conflict with any policies contained in the City of Gonzales General Plan. For funding source and other considerations, the site should be located within the existing city limits of Gonzales.

To accommodate the space and amenity needs described above and to allow for future expansion, a community facility should be located on a site of a least one (1) acre in size. The site should be vacant and relatively vegetation-free. There should be direct access via improved public rights-of-way, including multiple access for fire and other emergencies. Direct access to a major highway is desirable. The site should not present conflicts with neighboring land uses. The City must be able to obtain site control within a reasonable amount of time (i.e. the site should be for sale.) The preliminary design plan and cost estimate are located in *Appendix A* and *Appendix B*, respectively, of this report.

4.2 Property Profiles and Analysis

The following properties were examined during this assessment:

Site 1: Elko and First Street



(looking Northwest)

APN: 020-212-003-000

Zoning: PF (Public Facility)

Size: +/- 3 Acres

Access: Good

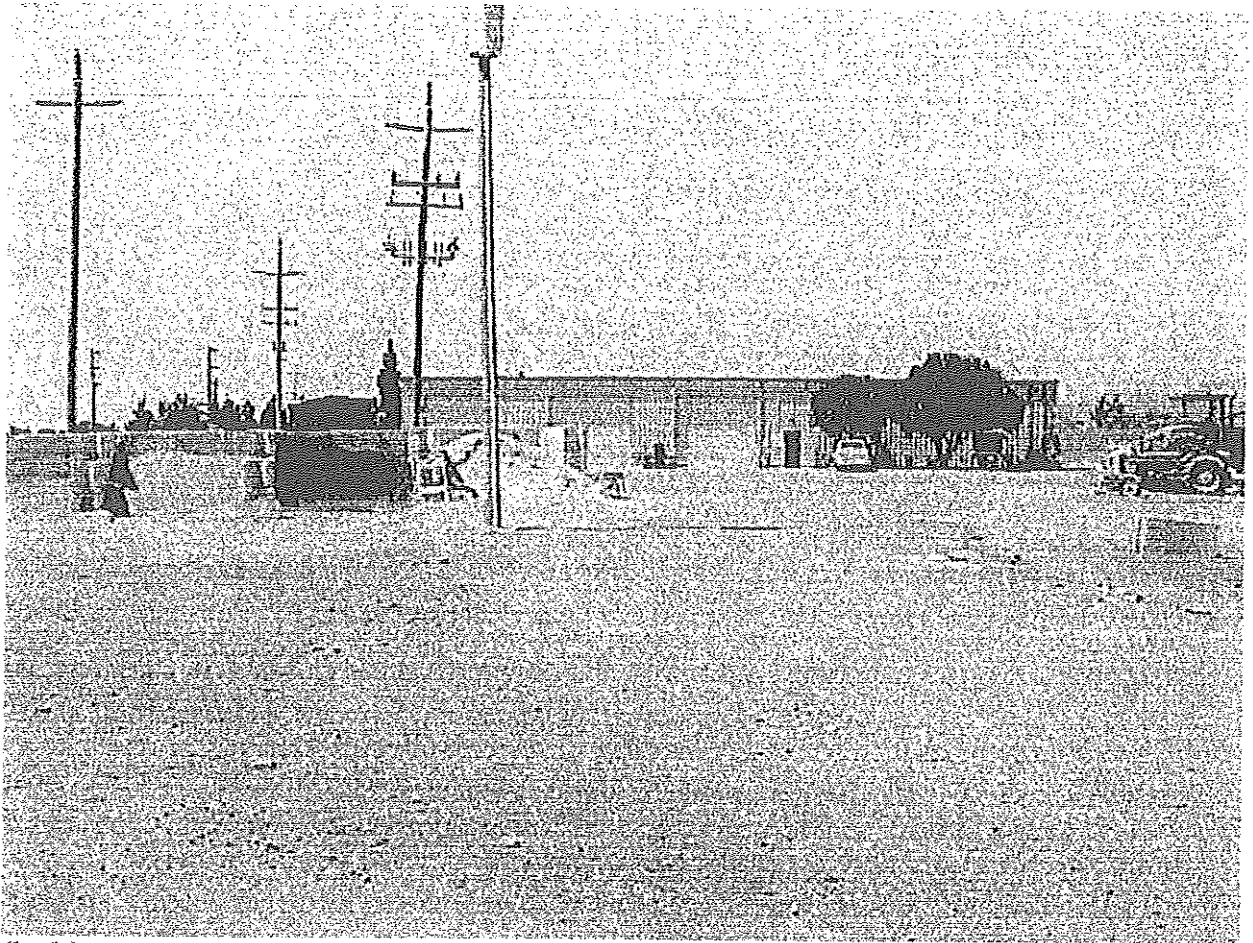
Flood Zone: N/A

General Description: The parcel is located on the corner of Elko and First Street. The public swimming pool (Centennial Pool) is located directly northwest; Fairview Middle School and La Gloria Elementary School are located north and east, respectively, and Centennial Park is located directly southeast.

Analysis: This site is centrally located and is advantageous with its proximity to the park, pool, and schools. The site has been zoned as a public facilities district. Access to a community facility would only be within a short walking distance from any of the existing public facilities, creating a central community complex. However, there is an absence of adequate parking space for the existing public facilities. A community facility located on this site would create more traffic and add to the existing parking problem. In addition, the

site would not be able to accommodate future expansion, should the City decide to expand at a later date.

Site 2: Public Works Yard



(looking Northwest)

APN: 020-020-012-000

Zoning: PF (Public Facility)

Size: +/- 3 acres

Access: Good

Flood Zone: N/A

General Description: The site is located near Centennial Drive and Center Street.

Analysis: The site is currently utilized as the public works yard. Of the sites evaluated for this study, the site appears most isolated. A community facility would not be easily visible or accessible.

Site 3: Fanoe Road and Fifth Street (Johnson Canyon Road)



(looking North)

APN: unknown

Zoning: R-2 (Medium Density Residential)

Size: +/- 3 acres

Access: Good

Flood Zone: N/A

General Description: The site is located at Fanoe Road and Fifth Street (Johnson Canyon Road). The surrounding area is open space and primarily vacant. Residential units are located southwest of the site.

Analysis: The site is adequate in size and includes sufficient space for parking. Future expansion of the community facility would be feasible. A new park is to be constructed and would complement a community facility. A new motel however, is to be constructed on the adjacent site, which is zoned as Highway Commercial (HC). The site is adjacent to a contiguous block of land that is zoned as HC, which also includes the shopping center located along Fifth Street. The site would not be ideal for a community facility due the proximity to the HC District, an area that is designed to accommodate highway and tourist

oriented uses. With children frequently utilizing the community facility, proximity to a commercial area could raise safety issues.

Site 4: Street Address Unavailable (North of Gloria Road, South of Herald Parkway)



(looking South)

APN: unknown

Zoning: R-1, Low Density Residential (Pre-zoned only)

Size: +/- 7 acres

Access: Pending

Flood Zone: N/A

General Description: The site is north of Gloria Road, south of Herald Parkway. The site is currently vacant and located within the City's sphere of influence. The surrounding area is primarily vacant with the exception of residential units located northwest and Highway 101 located directly west.

Analysis: The area has been pre-zoned as R-1, low density residential, which would allow a community facility to be constructed with a conditional use permit. The City has designated adjacent sites for the construction of a new school and library. The site could accommodate future expansion and provides adequate space for parking. In addition, a community facility would be consistent in the area, with proximity to the two aforementioned public facilities. There is no immediate infrastructure, however should the City proceed with plans to build a

new school and library, infrastructure for the site would be available. Visibility from Highway 101 is good. Although this may not provide an immediate benefit to Gonzales residents, a well-designed facility could provide an identifiable marker for the City. Currently, there is no street access to the site. This too will be addressed when the school and library are constructed. Transportation to this site may be problematic for residents who live near Gonzales' downtown area where the current community center is located, however, this would balance the number of public facilities available to residents living near the City's historically downtown core and residents living in the newer housing developments.

APPENDIX B: Cost Estimate*

	<u>Units</u>	<u>Type</u>	<u>Unit Cost</u>	<u>Total Budget</u>
• Community Center Building	21,350	s.f.	\$ 300.00	6,405,000.00
• Parking Lot (asphalt)	57,400	s.f.	\$ 4.50	258,300.00
• Concrete	39,975	s.f.	\$ 6.00	239,850.00
• Landscaping	90,950	s.f.	\$ 6.00	545,700.00
• Turf	63,375	s.f.	\$ 2.00	126,750.00
• Maintenance Building	800	s.f.	\$ 150.00	120,000.00
• Play Area (2-5 year)	3,000	s.f.	\$ 25.00	75,000.00
• Play Area (5-12 year)	6,525	s.f.	\$ 25.00	163,125.00
• Retaining Wall	322	l.f.	\$ 75.00	24,150.00
• Site Furnishings				
• Trash	8		\$ 450.00	3,600.00
• Tables	20		\$ 750.00	15,000.00
• Benches	20		\$ 550.00	11,000.00
• Storm Sewer	1	l.s	\$ 75,000.00	75,000.00
• Electrical Service	1	l.s	\$ 18,000.00	18,000.00
• Gas	1	l.s	\$ 10,000.00	10,000.00
• Water and Sanitary Sewer Connections	1	l.s	\$ 50,000.00	50,000.00
• Signage	1	l.s	\$ 30,000.00	30,000.00
• Site and Parking Lighting	1	l.s	\$ 110,000.00	110,000.00
• Street Improvements	1	l.s	\$ 80,000.00	80,000.00
			TOTAL	\$ 8,360,475.00
• Future Community Center Expansion	14,316	s.f.	\$ 300.00	4,294,800.00

*Prepared by SSA Landscape Architects, Inc.

APPENDIX C: Photos of Existing Community Center (117 FOURTH STREET)

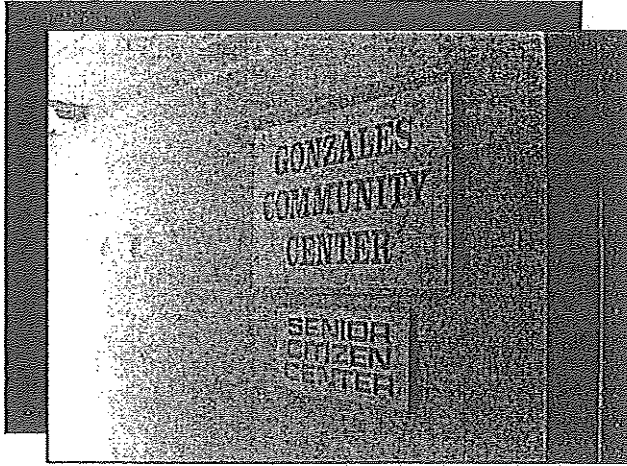


Figure 1. Exterior – Sign near entrance

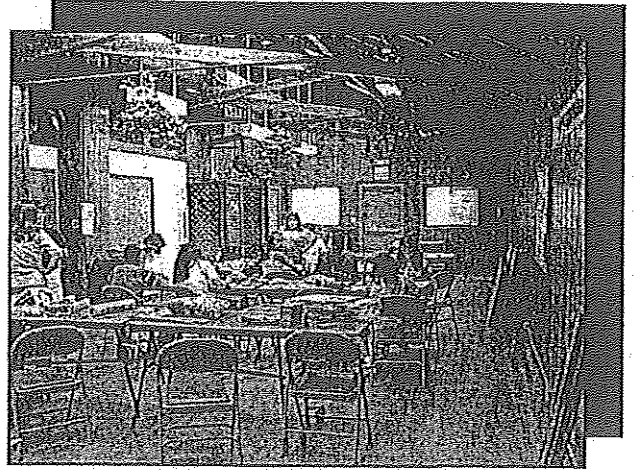


Figure 2. View of Interior

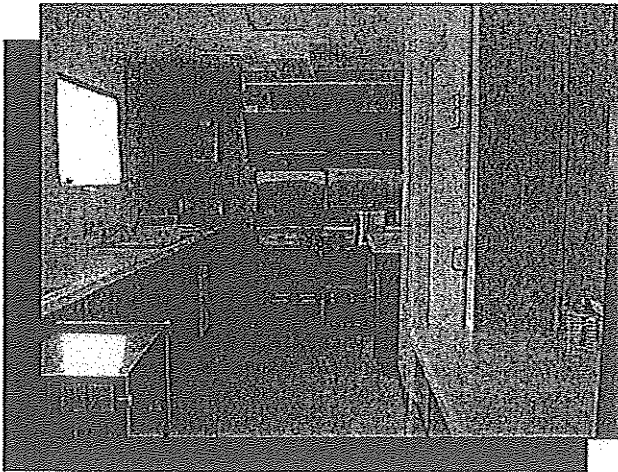


Figure 3. Kitchen



Figure 4. Storage space

Photos taken by Connerly & Associates, Inc. 2001

*APPENDIX D: List of Sources**

1. *City of Gonzales General Plan*; July 1996.
2. *City of Gonzales Recreational Needs Survey*; 1998
3. *City of Gonzales Zoning Ordinance*.
4. *U.S. Census Bureau Home Page* (1990 and 2000); U.S. Department of Commerce.

* The above only represents a partial listing of sources most frequently referenced in this study. In addition to the primary sources above, research and analysis for this study comes from information gathered from numerous local professionals, specialists and City residents.

4.3 Three-Year Operation and Maintenance Budget

Should the City obtain the funding necessary to construct such a facility, the following operation and maintenance budget may be used as a resource. It is based on the operation and maintenance costs of other community facilities in the region, adjusted for relative size and construction costs, and discussions with service providers and building professionals. This budget only reflects the cost of operation and maintenance of the actual building. This does not include costs for the operation of recreational, childcare or social programs to be held in the building, as commitment to specific programs have not been identified. The budget reflects a 3 percent annual, inflation rate.

1ST YEAR (total budget \$48,800)

Cost Category	Total
1 Full-Time Custodian	\$24,200
Power	\$6,600
Water/sewer	\$1,320
Solid Waste	\$880
Repair/Minor Maintenance	\$1,000
State Mandated Recycling	\$500
Building/Improvements	\$1,650
Supplies	\$5,500
Landscaping/Yard Work	\$4,400
Emergency (pests, etc.)	\$1,100
Phone Service	\$1,650
Total	\$48,800

2nd YEAR (total budget \$50,265)

Cost Category	Total
1 Full-Time Custodian	\$24,925
Power	\$6,800
Water/sewer	\$1,360
Solid Waste	\$905
Repair/Minor Maintenance	\$1,030
State Mandated Recycling	\$515
Building/Improvements	\$1,700
Supplies	\$5,660
Landscaping/Yard Work	\$4,530
Emergency (pests, etc.)	\$1,130
Phone Service	\$1,710
Total	\$50,265

3rd YEAR (total budget \$51,770)

Cost Category	Total
1 Full-Time Custodian	\$25,670
Power	\$7,000
Water/sewer	\$1,400
Solid Waste	\$940
Repair/Minor Maintenance	\$1,060
State Mandated Recycling	\$530
Building/Improvements	\$1,750
Supplies	\$5,830
Landscaping/Yard Work	\$4,665
Emergency (pests, etc.)	\$1,165
Phone Service	\$1,760
Total	\$51,770

5. ANALYSIS OF POTENTIAL FUNDING SOURCES

5.1 Background

Since most small cities in California do not have the financial resources to construct their own community facilities, and are unable to service large debts, it becomes essential for them to explore outside sources of financing, primarily public and private grant making organizations. There are state and federal grant programs that make grants for community facilities each year all over California each year. Additionally, there are more than 51,000 private and community foundations in the United States today.

The following is a list of common terminology utilized in funding research:

- **Community Foundation** - a 501(c)(3) organization that makes grants for charitable purposes in a specific community or region and held in an endowment, income earned by the endowment is then used to make grants.
- **Company Sponsored Foundation** (corporate foundation) – a private foundation whose grant funds are derived primarily from the contributions of a profit-making business organization.
- **Family Foundation** – an independent private foundation with funds derived from an individual or members of a single family.
- **Independent Foundation** – a grantmaking organization usually classified by the IRS as a private foundation. Independent foundation may also be known as a family foundation, general purpose foundation, special purpose foundations, or private non-operating foundations.
- **Private Foundation** – a non-government, nonprofit organization with funds (usually from a single source, such as an individual family, or corporation) and program managed by its own trustees or directors that was established to maintain or aid social, educated, religions, or other charitable activities serving the common welfare, primarily through the making of grants.
- **Public Charities** – an organization that is tax exempt under 501(c)(3) and is classified by the IRS as not a private foundation. Public charities generally derive their funding or support from the general public in carrying out social, educational, religious, or other charitable activities serving the common welfare. Some public charities engage in grantmaking activities, although most engage in direct service or other tax exempt activities.

Like the individuals or companies who established them, foundations differ dramatically from each other in their giving interests. The City of Gonzales should use a variety of tools to identify those foundations with an interest in supporting the construction of a community facility.

The following are types of support:

- **Building/Renovation** –Grants for constructing, renovating, remodeling, rehabilitating property. Includes general or unspecified capital awards.
- **General/Operating Support** – Grants for the day-to-day operating costs of an existing program or organization, or to further the general purpose of an organization.
- **Marketing/Challenge Support** – Grants to match funds provided by another donor and grants paid only if the donee is able to raise additional funds from another source.
- **Seed Money** – Grants to start, establish, or initiate new projects or organizations; may cover salaries, and other operating expenses of a new project.

The most effective results came from using the following three approaches towards research:

- The **subject** approach identifies foundations that have expressed an interest in funding programs in a specific subject field, such as higher education, or the arts.
- The **geographic** approach identifies foundations that fund programs in a particular city, state, or region. Although some give nationally and even internationally, most foundations limit their giving to specific geographic areas.
- The **type of support** approach identifies foundations that provide specified types of support, such as building funds, seed money, scholarships to individuals or general operating support.

5.2 Private Funding Sources

AT&T PEBBLE BEACH NATIONAL PRO-AM YOUTH FUND

CONTACT: Carmel C. Martin, Jr., Secy.-Treasurer, 490 Calle Principal, Monterey, CA 93940; P.O. Box 112 Monterey, CA 93942-0112. Telephone: (831) 375-3151

TYPE OF GRANTMAKER: Independent foundation.

BACKGROUND: Established in 1963 in CA.

PURPOSE AND ACTIVITIES: Giving primarily for youth agencies, social and family services, and higher and secondary education; support also for health services, hospices, and cultural organizations, including the fine arts.

FIELDS OF INTEREST: Arts; **Children/youth, services; Family services;** Health care; Health organizations; Higher education; Human services; Performing arts; Residential/custodial care, hospices; Secondary school/education.

GEOGRAPHIC FOCUS: California

TYPES OF SUPPORT: **Building/renovation,** Consulting services, Equipment, **Matching/challenge support,** Scholarship funds.

LIMITATIONS: **Giving primarily in Monterey** and Santa Cruz counties, CA. No grants to individuals.

APPLICATION INFORMATION: Application form not required. Applicants should submit the following:

1) detailed description of project and amount of funding requested

Initial approach: Letter

Copies of proposal: 1

Board meeting date(s): July, Aug., Sept., Oct., and Dec.

Deadline(s): None

FINANCIAL DATA: Total giving, \$501,620; qualifying distributions, \$501,606; giving activities include \$501,620 for 164 grants (high: \$17,000; low: \$500).

EIN: 946050251

The following grants were reported in 2000:

- \$21,000 to Monterey Peninsula College, Monterey, CA, For program support.
- \$6,000 to Carmel Bach Festival, Carmel, CA, For outreach program.
- \$5,000 to California State University at Monterey Bay Foundation, Seaside, CA, For basketball program.

- \$5,000 to Carmel Valley Community Youth Center, Carmel Valley, CA, For parking lot refurbishment.
- \$5,000 to Monterey County Cultural Council, Carmel, CA, For art supplies.
- \$5,000 to Monterey High School, Monterey, CA, For production costs.
- \$5,000 to Salinas Union High School District, Salinas, CA, For Salinas High School scholarships.
- \$5,000 to San Jose State University, San Jose, CA, For golf program.
- \$5,000 to Santa Catalina School, Monterey, CA, For financial aid and scholarships.
- \$5,000 to York School, Monterey, CA, For scholarships.

THE R. C. BAKER FOUNDATION

CONTACT: Frank L. Scott, Chair P.O. Box 6150 Orange, CA 92863-6150 Telephone: (714) 750-8987

TYPE OF GRANTMAKER: Independent foundation.

BACKGROUND: Trust established in 1952 in CA.

PURPOSE AND ACTIVITIES: Emphasis on higher education, including scholarships administered by selected colleges and universities; some support for hospitals and health agencies, cultural programs, and social service and youth agencies.

FIELDS OF INTEREST: Arts; **Children/youth, services**; Disabled; Education; Food services; Health care; Higher education; Hospitals (general); **Human services**; Leadership development; Medical research; Mental health/crisis services; Museums; Performing arts; Visual arts; **Youth development, services**.

GEOGRAPHIC FOCUS: National

TYPES OF SUPPORT: Annual campaigns, **Building/renovation**, Capital campaigns, Continuing support, Emergency funds, Equipment, **General/operating support**, Program development, Research.

LIMITATIONS: Giving on a national basis. No grants to individuals, or for endowment funds; no loans.

APPLICATION INFORMATION: Application form not required. Applicants should submit the following:

1) detailed description of project and amount of funding requested 2) copy of IRS Determination Letter

Initial approach: Cover letter with proposal

Copies of proposal: 1

Deadline(s): Submit proposal preferably in Apr. or Sept.; deadline May 1 and Oct. 1

FINANCIAL DATA: (yr. ended 12/31/98) Total giving, \$1,384,250; qualifying distributions, \$1,455,140; giving activities include \$1,384,250 for 94 grants (high: \$278,000; low: \$500; average: \$1,000-\$5,000).
EIN: 951742283

THE BOTHIN FOUNDATION

CONTACT: Lyman H. Casey, Exec. Dir. P.O. Box 29906 San Francisco, CA 94129-0906
Telephone: (415) 561-6540; FAX: (415) 561-6477
URL: <http://www.pacificfoundationservices.com/bothin/index.html>

TYPE OF GRANTMAKER: Independent foundation.

BACKGROUND: Incorporated in 1917 in CA.

PURPOSE AND ACTIVITIES: Giving primarily for youth, with occasional funding for the elderly, the disabled, health care, and community and human services; grants to arts groups are limited to those serving youth. The foundation prefers to make grants for capital or building and equipment needs.

FIELDS OF INTEREST: Aging, centers/services; **Child development, services; Children/youth, services; Disabled; Environment; Family services; Homeless, human services; Human services.**

GEOGRAPHIC FOCUS: California

TYPES OF SUPPORT: **Building/renovation, Capital campaigns, Equipment.**

LIMITATIONS: **Giving primarily in CA**, with emphasis on San Francisco, Marin, Sonoma, San Mateo, and Santa Barbara counties. No support for religious organizations, or educational institutions (except those directly aiding the developmentally or learning disabled). No grants to individuals, or for general operating funds, endowment funds, program support, scholarships, fellowships, medical research conferences or for production or distribution of films or other media presentations; no loans.

APPLICATION INFORMATION: Application form not required. Applicants should submit the following:

1) brief history of organization and description of its mission; 2) copy of current year's organizational budget and/or project budget; 3) copy of IRS Determination Letter; 4) detailed description of project and amount of funding requested

Initial approach: Letter containing a brief outline of the project

Copies of proposal: 1

Deadline(s): Nov. 15, Mar. 15, and June 30

Final notification: 2 to 3 months

FINANCIAL DATA: (yr. ended 12/31/98) Total giving, \$1,422,895; qualifying distributions, \$1,661,002; giving activities include \$1,422,895 for 108 grants (high: \$78,996; low: \$1,000).
EIN: 941196182

THE C.A.W. FOUNDATION

CONTACT: Mary Gregory, Exec. Dir., Presidio Bldg., 1016, No. 300, P.O.Box 29906, San Francisco, CA 94129 Telephone (415) 561-6540
URL: <http://pacificfoundationservices.com/caw>

TYPE OF GRANTMAKER: Independent foundation.

BACKGROUND: Established in 1997 in CA.

FIELDS OF INTEREST: **Children/youth**, services; Education; Environment; **Family services**, domestic violence; Health care; Housing/shelter, homeless; **Human services**; Residential/custodial care, hospices; Substance abuse, prevention; Substance abuse, treatment.

GEOGRAPHIC FOCUS: California; Washington

TYPES OF SUPPORT: **Building/renovation**, Capital campaigns, Continuing support, **General/operating support**, Program development.

LIMITATIONS: Giving primarily in San Francisco, San Benito, Mendocino and southern **Monterey counties, CA**; some giving also in San Luis Obispo County, CA and Seattle, WA.
No grants to individuals or religious entities, or for medical research, endowments or annual appeals.

APPLICATION INFORMATION: Application form not required.

Initial approach: Letter

Deadline(s): 12 weeks prior to board meeting (Board meeting dates usually March and September)

Final notification: 2 to 3 months

FINANCIAL DATA: (yr. ended 12/31/99): Assets, \$4,147,700 (M); gifts received, \$11,920; expenditures, \$248,726; total giving, \$179,500; qualifying distributions, \$215,125; giving activities include \$179,500 for 20 grants (high: \$20,000; low: \$2,000).
EIN: 943269201

THE CALIFORNIA ENDOWMENT

CONTACT: Rebecca Martin, Grants Mgr. 21650 Oxnard St., Ste. 1200, Woodland Hills, CA 91367; Telephone: (800) 449-4149, Additional tel.: (818) 703-3311, ext. 234
FAX: (818) 703-4193
E-mail: bmartin@calendow.org
URL: <http://www.calendow.org>

TYPE OF GRANTMAKER: Independent foundation.

BACKGROUND: Established in 1996 in CA; converted from Blue Cross of California.

PURPOSE AND ACTIVITIES: To expand access to affordable, quality health care for underserved individuals and communities in CA.

PROGRAM AREA(s): The CommunitiesFirst responsive grantmaking program is rooted in two fundamental beliefs:

1) that the role of community is central to health; and 2) that inclusion, partnership, and community ownership, with a focus on local assets and resources, are critical to addressing local issues successfully. The CommunitiesFirst grants program was established to stimulate innovation in addressing persistent and emerging health challenges. Investing resources in the ideas and resources of communities can contribute to significant improvements in the health and well-being of all Californians. The CommunitiesFirst program integrates objective from each of the four key areas of interest. The foundation invites communities to develop and explore new ideas and strategies, test models, and build partnerships to improve the health and well-being of underserved individuals, families, and communities.

FIELDS OF INTEREST: Aging; AIDS; **Child development, services; Children/youth, services; Community development;** Crime/violence prevention; Dental care; Disabled; Health care; Health care, clinics/centers; Health care, rural areas; Health care, support services; Health organizations; Housing/shelter, services; Mental health/crisis services; Nutrition; Public health; Reproductive health; Welfare policy/reform.

GEOGRAPHIC FOCUS: California

TYPES OF SUPPORT: **Building/renovation,** Conferences/seminars, Continuing support, Employee matching gifts, Equipment, **General/operating support, Matching/challenge support,** Program development, Program evaluation.

LIMITATIONS: Giving limited to CA. No grants to individuals.

APPLICATION INFORMATION: Strategic planning to be completed. Unsolicited applications not considered. Application form required.

Copies of proposal: 2

Board meeting date(s): Quarterly

Deadline(s): None
Final notification: 3 to 6 months

FINANCIAL DATA: (yr. ended 02/28/00) Total giving, \$178,411,043; qualifying distributions, \$195,815,030; giving activities include \$178,110,066 for grants and \$300,977 for employee matching gifts.
EIN: 954523232

SELECTED GRANTS: The following grants were reported in 1999:

- \$11,000,000 to Rural Community Assistance Corporation, Sacramento, CA, For program to improve health, safety and living conditions of California farm workers, payable over 5 years.
- \$10,000,000 to Public Health Institute, Berkeley, CA, To establish collaboration to plan and implement community-based systems promoting and protecting public health including efforts for communities and organizations to identify needs and develop strategies to address them including efforts to mobilize action addressing public health issues facing California, payable over 5 years.
- \$10,000,000 to Tides Foundation, San Francisco, CA, For information management systems for community clinics, payable over 2 years.
- \$8,500,000 to California Department of Health Services, County Medical Services Program Governing Board, Sacramento, CA, To explore effectiveness and efficiency of rural wellness and prevention services by seeking partners in rural centers, payable over 4 years.
- \$7,197,019 to California Health Collaborative Foundation, San Diego, CA, For services and treatment for uninsured women with breast cancer who are not eligible for publicly funded treatment, payable over 2 years.
- \$5,300,000 to Corporation for Supportive Housing, Oakland, CA, For programs to improve health and well-being of homeless people with mental illness, substance abuse and HIV/AIDS, payable over 2 years.
- \$5,000,000 to California Dental Association Research Fund, Sacramento, CA, For oral health programs in urban and rural cities through water system fluoridation, payable over 2 years.
- \$5,000,000 to California Health Foundation and Trust, Sacramento, CA, To increase use and quality of tele-health and tele-medicine programs, payable over 3 years.
- \$3,500,000 to United Indian Health Services, Trinidad, CA, For construction of model tribally-owned and operated Health Village that incorporates traditional Indian values and practices into health services and programs.
- \$2,000,000 to Project Concern International, San Diego, CA, To improve health of California border communities, payable over 3 years.

S. H. COWELL FOUNDATION

CONTACT: Susan T. Vandiver, V.P., Grant Programs, 120 Montgomery St., Ste. 2570
San Francisco, CA 94104; Telephone: (415) 397-0285
URL: <http://www.shcowell.org>

TYPE OF GRANTMAKER: Independent foundation.

BACKGROUND: Trust established in 1955 in CA.

PURPOSE AND ACTIVITIES: The foundation is interested in addressing the underlying causes of poverty and social problems, promoting neighborhood and civic participation, and building sustainable local resources. Grants are made to achieve specific outcomes or to test promising approaches supported by thoughtful evaluation.

PROGRAM AREA(s): *Family Resource Center Grants* - A family resource center (FRC) is a public-private partnership that strengthens parents' abilities to nurture their children through a range of formal and informal services. Model FRCs promote the growth of individuals and families and change local service delivery systems and communities. The foundation is interested in FRC's that offer comprehensive services including: 1) parent education and child development activities; 2) resources and referral; 3) peer-to-peer supports; 4) life skills and advocacy in a welcoming setting; 5) provide case management; 6) employment services; 7) family health and wellness counseling; 8) family literacy; 9) home visits; 10) substance abuse treatment; and 11) youth development and other currently development activities.

Public Education Grants - California's public schools are experiencing growing and increasingly diverse student enrollments and face pressures on their teachers, facilities, curricula, and finances. The foundation is interested in projects whose outcomes relate to: 1) improving student learning and literacy; 2) increasing parent or neighborhood participation in education; or 3) supporting winning teachers and teacher candidates for National Board certification and teacher development. Successful applicants must demonstrate ongoing ties with public schools and service providers in the communities they target. The foundation is particularly interested in projects that link local public schools with family resource centers. The foundation also makes grants to students for school improvement, summer and after-school enrichment and scholarships.

Youth Development Grants - Youth need constructive alternatives to risky behavior, opportunities for healthy development, and organizations to: 1) provide a range of activities that promote competence in leadership, skill-building, citizenship, vocational awareness and readiness, cognition and creativity, social relations, promote healthy relationships with caring adults, and health and well-being; 2) initiate or enhance center-based, after-school, and weekend youth activities in low-income communities, including capital; and 3) provide professional training for youth workers.

FIELDS OF INTEREST: Economically disadvantaged; Education; Education, early childhood education; Human services; Minorities; Vocational education; Youth development.

GEOGRAPHIC FOCUS: California

TYPES OF SUPPORT: Building/renovation, Capital campaigns, Consulting services, Emergency funds, Employee matching gifts, Equipment, Land acquisition, Matching/challenge support, Program development, Program-related investments/loans, Seed money.

LIMITATIONS: Giving limited to CA, excluding southern CA. No support for political or sectarian religious purposes, or hospitals. No grants to individuals, or for operating budgets, endowments, media programs, continuing support, annual campaigns, routine program administration, workshops, symposia, deficit financing, fellowships, academic or other research, medical research or treatment, publications, or conferences.

APPLICATION INFORMATION: Application form not required. Applicants should submit the following:

- 1) brief history of organization and description of its mission
- 2) detailed description of project and amount of funding requested
- 3) copy of current year's organizational budget and/or project budget
- 4) timetable for implementation and evaluation of project
- 5) listing of additional sources and amount of support
- 6) copy of IRS Determination Letter
- 7) copy of most recent annual report/audited financial statement/990
- 8) listing of board of directors, trustees, officers and other key people and their affiliations

Also include a letter from the Franchise Tax Board stating that the organization is exempt from California income tax. If the project is of interest to the foundation, additional information may be requested. The foundation will then arrange site visits. Communication with directors is discouraged. When a grant is made with several pay periods, the grantee is required to present evidence of satisfactory performance and that all of the terms and conditions of the grant have been met prior to payment of further funds.

Initial approach: Telephone inquiry or 2- to 3-page letter

Copies of proposal: 1

Board meeting date(s): Monthly

Deadline(s): None

Final notification: 3 to 6 months

FINANCIAL DATA: (yr. ended 12/31/99) Total giving, \$6,736,761; qualifying distributions, \$7,807,369; giving activities include \$6,695,416 for 127 grants (high: \$300,000; low: \$500; average: \$20,000-\$100,000) and \$41,345 for 65 employee matching gifts.
EIN: 941392803

SELECTED GRANTS: The following grants were reported in 1998.

- \$334,000 to Rubicon Programs, Richmond, CA.

- \$325,000 to San Francisco Unified School District, San Francisco, CA.
- \$300,000 to Burbank Housing Development Corporation, Santa Rosa, CA.
- \$250,000 to Hamilton Family Center, San Francisco, CA.
- \$225,000 to Family Service Association of the Mid-Peninsula, Palo Alto, CA.
- \$200,000 to Association for Community Based Education, DC.
- \$200,000 to Shelter Network of San Mateo County, Redwood City, CA.
- \$200,000 to University of California, Berkeley, CA.
- \$200,000 to Vacaville Community Housing, Vacaville, CA.
- \$184,000 to Pittsburg Preschool Coordinating Council, Pittsburg, CA.

FIRST AMERICAN FINANCIAL FOUNDATION

CONTACT: 1 First American Way, Santa Ana, CA 92707

TYPE OF GRANTMAKER: Company-sponsored foundation.

BACKGROUND: Established in 1985 in CA.

FIELDS OF INTEREST: **Community development**, neighborhood development; Higher education; Human services; Museums.

GEOGRAPHIC FOCUS: California

TYPES OF SUPPORT: **General/operating support.**

LIMITATIONS: **Giving primarily in CA.** No grants to individuals.

FINANCIAL DATA: (yr. ended 10/31/98) Total giving, \$320,500; qualifying distributions, \$320,500; giving activities include \$320,500 for 15 grants (high: \$100,000; low: \$5,000).
EIN: 330148572

SELECTED GRANTS: The following grants were reported in 1998.

- \$100,000 to Orange County Performing Arts Center, Costa Mesa, CA, For general operating support.
- \$50,000 to City of Hope, For general operating support.
- \$40,000 to Orange County Business Council, Irvine, CA, For general operating support.
- \$30,000 to Orangewood Childrens Foundation, Garden Grove, CA, For general operating support.
- \$25,000 to Center, The, Redding, CA, For general operating support.
- \$20,000 to Boys and Girls Club of Santa Ana, Santa Ana, CA, For general operating support.
- \$15,000 to South Coast Repertory Theater, Costa Mesa, CA, For general operating support.

- \$15,000 to University of Southern California, School of Urban Planning and Development, Los Angeles, CA, For general operating support.
- \$12,000 to Chapman University, Orange, CA, For general operating support.
- \$10,000 to Bowers Museum of Cultural Arts, Santa Ana, CA, For general operating support.

FRIEDMAN FAMILY FOUNDATION

CONTACT: Lisa Kawahara, 204 E. 2nd Ave., PMB 719, San Mateo, CA 94401
 Telephone: (650) 342-8750
 FAX: (650) 342-8750
 E-mail: fffd@aol.com

TYPE OF GRANTMAKER: Independent foundation.

BACKGROUND: Established in 1964 in CA.

PURPOSE AND ACTIVITIES: Support for programs which attempt to end the cycle of poverty, especially programs that provide tools, support, asset building, and opportunity to people in need in order to overcome the root causes of their poverty, and in which the people to be helped are part of the design and decision making of the organization or project. Preference is given to new and creative programs, and programs working for systemic change.

FIELDS OF INTEREST: **Community development**; Economic development; Economically disadvantaged; Homeless.

GEOGRAPHIC FOCUS: California

TYPES OF SUPPORT: **General/operating support**, Program development, Program-related investments/loans.

LIMITATIONS: Giving primarily in the San Francisco Bay Area, CA. No grants to individuals, or for films, videos, conferences, seminars, capital campaigns, scholarships, research, or special or fundraising events.

APPLICATION INFORMATION: Application form required.

Initial approach: 2- to 3-page letter

Copies of proposal: 1

Deadline(s): Varies

Final notification: 4 to 6 months

Financial data: (yr. ended 02/28/00) Total giving, \$1,033,500; qualifying distributions, \$1,361,134; giving activities include \$1,033,500 for 167 grants (high: \$25,000; low: \$500; average: \$5,000-\$10,000) and \$200,000 for 2 program-related investments of \$1,000,000 each.
EIN: 946109692

GEORGES AND GERMAINE FUSENOT CHARITY FOUNDATION

CONTACT: Richard G. Herlihy, Mgr. 590 N. Rossmore Ave., No. 10 Los Angeles, CA 90004-2451, Telephone: (323) 462-7702

TYPE OF GRANTMAKER: Independent foundation.

BACKGROUND: Trust established in 1967 in CA.

PURPOSE AND ACTIVITIES: Giving primarily for education, youth services and the arts.

FIELDS OF INTEREST: Arts; **Child development, services; Children/youth, services;** Education; Health care; Health organizations; Hospitals (general); **Human services; Youth development, centers/clubs.**

GEOGRAPHIC FOCUS: California

TYPES OF SUPPORT: **Building/renovation, Capital campaigns, Continuing support, Equipment, General/operating support, Matching/challenge support.**

LIMITATIONS: **Giving limited to CA.** No support for religious organizations for religious purposes, or for political organizations. No grants to individuals, or for emergency or endowment funds, deficit financing, demonstration projects, publications, conferences, scholarships, or fellowships; no loans.

APPLICATION INFORMATION: Application form not required.

Initial approach: Letter

Copies of proposal: 1

Board meeting date(s): Sept.

Deadline(s): June 30 for consideration in the same year

FINANCIAL DATA: (yr. ended 07/31/98) Total giving, \$264,000; qualifying distributions, \$305,934; giving activities include \$264,000 for 78 grants (high: \$10,000; low: \$500).
EIN: 956207831

SELECTED GRANTS: The following grants were reported in 1999.

- \$10,000 to Meals on Wheels of Los Angeles, Los Angeles, CA.

- \$8,000 to Los Angeles County Museum of Art, Department of Costumes and Textiles, Los Angeles, CA, For special purpose fund.
- \$8,000 to San Diego Opera, San Diego, CA, For general support.
- \$7,500 to YMCA, Mid Valley, Oaks School, Van Nuys, CA, For after school project.
- \$7,000 to New Entra Casa, San Diego, CA, For general support.
- \$6,000 to Zoological Society of San Diego, San Diego, CA, For education outreach programs.
- \$5,000 to Bishops School, La Jolla, CA, For general support.
- \$5,000 to Children of the Night, Van Nuys, CA, For general support.
- \$5,000 to Childrens Hospital of Los Angeles, Childrens Aid Center, Los Angeles, CA.
- \$5,000 to Foundation for the Junior Blind, Los Angeles, CA, For general support.

THE WILLIAM G. GILMORE FOUNDATION

CONTACT: Faye Wilson, Secretary 120 Montgomery St., Ste. 1880 San Francisco, CA 94104
 Telephone: (415) 546-1400
 FAX: (415) 391-8732

TYPE OF GRANTMAKER: Independent foundation.

BACKGROUND: Incorporated in 1953 in CA.

PURPOSE AND ACTIVITIES: Grants largely for community-based organizations, including development and urban affairs, family and social services, the elderly, child welfare and development, health services, medical education, AIDS programs, conservation, and the arts.

FIELDS OF INTEREST: Aging; Aging, centers/services; AIDS; Arts; **Child development, education; Child development, services; Children/youth, services; Community development;** Disabled; Economically disadvantaged; Education; Environment, natural resources; **Family services;** Health care; Homeless; Homeless, human services; **Human services;** Medical school/education; Mental health/crisis services; People with AIDS (PWAs); Public affairs; Residential/custodial care, hospices.

GEOGRAPHIC FOCUS: California; Oregon

TYPES OF SUPPORT: Annual campaigns, Continuing support, Emergency funds, **General/operating support,** Scholarship funds.

LIMITATIONS: **Giving primarily in northern CA and OR.** No grants to individuals.
 Publications: Application guidelines.

APPLICATION INFORMATION: Application form not required.
Initial approach: Proposal

Copies of proposal: 1
Board meeting date(s): June and Dec.
Deadline(s): May 1 and Nov. 1
Final notification: 2 months

FINANCIAL DATA: (yr. ended 12/31/98) Total giving, \$1,039,050; qualifying distributions, \$1,131,854; giving activities include \$1,039,050 for 155 grants (high: \$50,000; low: \$500; average: \$500-\$5,000).
EIN: 946079493

HAIGH-SCATENA FOUNDATION

CONTACT: Ronald W. Clement, Exec. Dir. P.O. Box 4399 Davis, CA 95617-4399
Telephone: (530) 758-5327

TYPE OF GRANTMAKER: Independent foundation.

BACKGROUND: Established in 1965 in CA.

PURPOSE AND ACTIVITIES: Grants awarded to social change projects targeting the most at-risk children or youth and their families in northern CA.

FIELDS OF INTEREST: **Children/youth, services; Community development;** Community development, citizen coalitions; **Community development, neighborhood development;** Crime/violence prevention, delinquency prevention; Economically disadvantaged; Government/public administration; Public affairs; Public policy, research.

GEOGRAPHIC FOCUS: California

TYPES OF SUPPORT: Conferences/seminars, Consulting services, Continuing support, Emergency funds, **General/operating support**, Program development, Program evaluation, Research, **Seed money**, Technical assistance.

LIMITATIONS: **Giving limited to northern CA.** No support for direct services. No grants to individuals, or for capital campaigns, endowments, equipment purchases, or media production or distribution.

APPLICATION INFORMATION Inquiries accepted. Unsolicited proposals not accepted.
Application form required.

Initial approach: Telephone

Copies of proposal: 1

Deadline(s): None

Final notification: Within 6 months

FINANCIAL DATA: (yr. ended 08/31/99) Total giving, \$408,207; qualifying distributions, \$513,132; giving activities include \$408,207 for 21 grants (high: \$46,250; low: \$76).
EIN: 941753746

SELECTED GRANTS: The following grants were reported in 1999.

- \$46,250 to Pacific Islander Outreach, East Palo Alto, CA, To strengthen project.
- \$40,000 to Sierra Adoption Services, Nevada City, CA, For Adoption Legal Advocacy Project.
- \$37,700 to Canal Community Alliance, San Rafael, CA, For Community Organizing Project.
- \$32,500 to Local Economic Assistance Program (LEAP), Oakland, CA, For OpNet, Multimedia Opportunity Program.
- \$30,250 to Center for Community Advocacy, Salinas, CA, For Farmworker Outreach, Education and Leadership Program.
- \$30,000 to Center on Juvenile and Criminal Justice, San Francisco, CA, For Justice Policy Institute.
- \$30,000 to Child Care Law Center, San Francisco, CA, For Increasing Access to Child Care for Low Income Families Project.
- \$30,000 to Mentoring Center, Oakland, CA, For Continued Stabilization of Internal Operations project.
- \$26,706 to Tides Center, San Francisco, CA, For C-Beyond Project.
- \$25,000 to California Partnership for Children, Sacramento, CA, For California Kinship-Foster Care Reform Project.

HARDEN FOUNDATION

CONTACT: Joseph C. Grainger, Exec. Dir. P.O. Box 779 Salinas, CA 93902-0779
Telephone: (831) 442-3005 , FAX: (831) 443-1429

TYPE OF GRANTMAKER: Independent foundation.

BACKGROUND: Established in 1963 in CA.

PURPOSE AND ACTIVITIES: The foundation supports projects that improve the well-being of young people; strengthen the family; develop individual self-reliance and health; prevent inappropriate institutionalization of individuals; improve the quality of life through cultural activities; encourage more humane treatment of animals; and eliminate duplication and improve coordination of social and community services.

FIELDS OF INTEREST: Aging, centers/services; Agriculture/food; Animal welfare; Arts; **Children/youth, services**; Environment; **Family services**; Health care; **Human services**; Mental health, treatment.

GEOGRAPHIC FOCUS: California

TYPES OF SUPPORT: Capital campaigns, **General/operating support, Matching/challenge support, Seed money.**

LIMITATIONS: **Giving limited to Monterey County**, with emphasis on the Salinas Valley, CA, area. No support for sectarian religious programs, nonagricultural related educational programs, operating foundations, or associations established for the benefit of organizations receiving substantial tax support. No grants for endowments, annual campaigns, conferences, or fundraising events.

APPLICATION INFORMATION: Application form required. Applicants should submit the following:

- 1) listing of board of directors, trustees, officers and other key people and their affiliations
- 2) copy of IRS Determination Letter
- 3) brief history of organization and description of its mission
- 4) copy of most recent annual report/audited financial statement/990
- 5) copy of current year's organizational budget and/or project budget
- 6) signature and title of chief executive officer
- 7) detailed description of project and amount of funding requested
- 8) results expected from proposed grant
- 9) how project's results will be evaluated or measured
- 10) timetable for implementation and evaluation of project
- 11) qualifications of key personnel
- 12) explanation of why grantmaker is considered an appropriate donor for project
- 13) how project will be sustained once grantmaker support is completed
- 14) principal source of support for project in the past

Initial approach: Letter

Copies of proposal: 2

Board meeting date(s): June and Dec.

Deadline(s): Mar. 1 and Sept. 1

FINANCIAL DATA: (yr. ended 02/28/00): Total giving, \$4,423,156; qualifying distributions, \$4,935,615; giving activities include \$4,423,156 for 136 grants (high: \$500,000; low: \$400; average: \$10,000-\$100,000).

EIN: 946098887

SELECTED GRANTS: The following grants were reported in 1998.

- \$400,000 to National Steinbeck Center, Salinas, CA for 2 grants: \$200,000 each (For design and construction).
- \$365,000 to Natividad Medical Foundation, Salinas, CA for 2 grants: \$200,000 (Toward construction at new Natividad Medical Center), \$165,000 (Toward construction at new Natividad Medical Center).
- \$50,000 to Salinas Valley Memorial Hospital Foundation, Salinas, CA, For bedside monitors and additional catherization procedure rooms to allow more complicated cases to be admitted.

- \$40,000 to Aromas Community Center Foundation, Aromas, CA, Toward development of community center and athletic facility to serve Aromas and North Monterey County.
- \$30,000 to Boys and Girls Club of the Monterey Peninsula, Seaside, CA, Toward operating support for Physical Education Programs.
- \$30,000 to Volunteer Action Network, Greenfield, CA, For operating support for Volunteer Action Network (VAN) in King City.
- \$25,000 to Monterey Bay Symphony Association, Carmel, CA, For operating support for in-school instrument demonstrations, full orchestra for students, annual family day concert, high school music coaching program, and complimentary and reduced cost tickets for students.
- \$25,000 to Planned Parenthood, Mar Monte, San Jose, CA, For health and education programs in Salinas Valley.

THE JAMES IRVINE FOUNDATION

CONTACT: Stefani Jacobson, Asst. Grants Mgr. 1 Market St. Stuart Tower, Ste. 2500
San Francisco, CA 94105 , Telephone: (415) 777-2244 , FAX: (415) 777-0869
URL: <http://www.irvine.org>

TYPE OF GRANTMAKER: Independent foundation.

BACKGROUND: Incorporated in 1937 in CA.

PURPOSE AND ACTIVITIES: Giving primarily for the arts, higher education, workforce development, civic culture, sustainable communities, and children, youth, and families.

PROGRAM AREA(s): The grantmaker has identified the following area(s) of interest:

Civic Culture: The program is guided by the following priority goals and strategies: 1) Strengthen the capacity of community-building institutions - Provide core, capacity-building support to model institutions using community organizing to engage residents in problem-solving, as well as to intermediary organizations providing technical assistance and/or evaluation to such institutions, support regional and statewide networks of congregations participating in civic work and intermediaries and institutional partners that provide technical assistance and applied research support to the member congregations, and support community-building efforts that engage people collectively with arts and humanities projects; 2) Increase naturalization and full civic participation in California's Central Valley - Provide core, capacity-building, and project support to organizations participating in the learning collaborative of the foundation-initiated Central Valley Partnership for Citizenship, as well as to participants providing technical assistance; and 3) Promote positive human relations across lines of race and ethnic origin - Provide capacity-building support, with evaluative components, to programs that employ new technologies to bridge borders among groups, including selected "anchor" institutions working to build knowledge and networks for knowledge-sharing.

Special Projects: The following priority goals and strategies describe the foundation's commitment to effective management and governance of nonprofits, its initiative to support community foundations, and its interest in enhancing the capacity of organized philanthropy: support innovative approaches that improve nonprofit management and governance, expand the philanthropic and leadership capacities of community foundations under the Community Foundations Initiative, and help build the field of community foundations in California by encouraging collaboration, sharing of expertise, and identifying best practices; and support efforts to enhance the effectiveness and impact of organized philanthropy in California.

Sustainable Communities: The program is guided by the following priority goals and strategies: 1) Support the emerging field of collaborative regional development - Support the creation, expansion and continuous improvement of regional partnerships and the assessment and dissemination of lessons learned from the field; 2) Encourage the sustainable use of land - Support consensus-building activities, including data collection and analysis, communication, and cross-sector convening, and to engage broad constituent support for long-term, comprehensive, multi-sector, land-use policies and practices at the community, regional, and state levels, promote the recycling of inner-city and other brownfield lands (i.e., unused or underutilized but valuable land that lies fallow because of the perception or reality of toxic contamination) by educating the public about successful redevelopment demonstration sites, and encouraging the reform of state and federal environmental and public health laws, and support sound, inclusive, realistic economic development planning and projects in forestlands and forest communities, utilizing an ecosystem approach that includes the needs of the human community as well as the natural environment, and 3) Encourage effective state and local governance - Support policy development, convening, and communication efforts that will help improve the effectiveness of California's state and local governments, with special emphasis on fundamental governance reform.

FIELDS OF INTEREST: Arts councils; Arts, cultural/ethnic awareness; Arts, folk arts; Arts, **multipurpose centers/programs**; Camp Fire; Civil rights, race/intergroup relations; **Community development**, neighborhood development; Economic development; Employment, job counseling; Employment, retraining; Employment, services; Employment, training; Environment, natural resources; Foundations (community); Foundations (public); Higher education; Higher education reform; Higher education, college; Higher education, university; Nonprofit management; Performing arts; Performing arts centers; Performing arts, ballet; Performing arts, dance; Performing arts, opera; Performing arts, orchestra (symphony); Performing arts, theater; Philanthropy/voluntarism; Public policy, research; Rural development; Voluntarism promotion; **Youth development, centers/clubs**; **Youth development, services.**

GEOGRAPHIC FOCUS: California

TYPES OF SUPPORT: Employee matching gifts, **General/operating support**, **Matching/challenge support**, Program development, Program evaluation, Program-related investments/loans, **Seed money**, Technical assistance.

LIMITATIONS: **Giving limited to CA.** No support for agencies receiving substantial government support. No grants to individuals.

APPLICATION INFORMATION: Application form not required. Applicants should submit the following:

- 1) copy of most recent annual report/audited financial statement/990
- 2) detailed description of project and amount of funding requested
- 3) copy of current year's organizational budget and/or project budget
- 4) timetable for implementation and evaluation of project
- 5) copy of IRS Determination Letter
- 6) signature and title of chief executive officer
- 7) listing of board of directors, trustees, officers and other key people and their affiliations
- 8) statement of problem project will address
- 9) how project's results will be evaluated or measured

Initial approach: Letter, telephone, or website for information

Copies of proposal: 2

Deadline(s): None

Final notification: Within 8 months

FINANCIAL DATA: (yr. ended 12/31/99): Total giving, \$48,922,963; qualifying distributions, \$55,219,931; giving activities include \$48,922,963 for 438 grants (high: \$1,070,000; low: \$600; average: \$20,000-\$250,000) and \$1,290,660 for 4 foundation-administered programs.

EIN: 941236937

SELECTED GRANTS: The following grants were reported in 1999.

- \$1,250,000 to Great Valley Center, Modesto, CA, For core support and for LEGACI re-granting program, payable over 2 years.
- \$1,000,000 to Bridge Group Advisors, Boston, MA, For strategy consulting to California nonprofits and knowledge dissemination activities within California, payable over 2 years.
- \$1,000,000 to K C E T Community Television of Southern California, Los Angeles, CA, For continued production support and expansion of Life and Times, nightly news and public affairs program in Los Angeles.
- \$1,000,000 to K Q E D, San Francisco, CA, For continued support for production and related outreach activities for Bay Window, series of local programs that explore Bay Area cultural and political perspectives.
- \$1,000,000 to Orange County Community Foundation, Irvine, CA, Toward restoration of original Irvine family mansion in Irvine Ranch Headquarters Historic Park.
- \$900,000 to San Diego Foundation, San Diego, CA, For continued core support for San Diego Dialogue, regional collaborative initiative and for regranting program, payable over 2 years.
- \$830,000 to Santa Clara University, Santa Clara, CA, For Building Partnership for Diversity, program to promote, coordinate and advance campus-wide multicultural initiatives, payable over 3 years.
- \$800,000 to California Institute for Rural Health Management, Point Richmond, CA, For working capital and operating support for locally-owned managed care business entities in four rural California communities participating in Developing Rural Integrated

Systems Initiative. Grants in the program area of Health will be discontinued after 1999, payable over 2 years.

- \$750,000 to Community Foundation of Santa Cruz County, Soquel, CA, For continued support for Project ACCESS, effort to improve youth development and mentoring opportunities for middle school-age youth in Santa Cruz County as part of Community Foundations Initiative, payable over 3 years.

THE LAURALIE IRVINE FOUNDATION

CONTACT: J.J. Irvine, Pres. 95 Robles Del Rio Carmel Valley, CA 93924

TYPE OF GRANTMAKER: Independent foundation.

BACKGROUND: Established in 1976.

PURPOSE AND ACTIVITIES: Primary areas of interest include child welfare and development, family services, the elderly, and health services.

FIELDS OF INTEREST: Aging; Aging, centers/services; AIDS; AIDS research; Alcoholism; Arts; **Child development, education; Child development, services; Children/youth, services;** Crime/violence prevention, delinquency prevention; Education; **Family services;** Health care; Health organizations; Hospitals (general); **Human services;** Reproductive health, family planning; Substance abuse, services.

GEOGRAPHIC FOCUS: California

TYPES OF SUPPORT: **Building/renovation,** Capital campaigns, Continuing support.

LIMITATIONS: **Giving limited to Monterey and San Benito counties, CA.** No support for schools or religious associations.

APPLICATION INFORMATION: Application form not required.

Initial approach: Letter

Copies of proposal: 1

Board meeting date(s): July and Dec.

Deadline(s): June 30 and Nov. 30

Final notification: Following board meetings

FINANCIAL DATA: (yr. ended 12/31/99): Total giving, \$60,050; qualifying distributions, \$59,441; giving activities include \$60,050 for 37 grants (high: \$5,500; low: \$50).

EIN: 510159257

THE KRESGE FOUNDATION

CONTACT: John E. Marshall III, Pres. and CEO, 3215 W. Big Beaver Rd. P.O. Box 3151
Troy, MI 48007-3151, Telephone: (248) 643-9630, FAX: (248) 643-0588
URL: <http://www.kresge.org>

TYPE OF GRANTMAKER: Independent foundation.

BACKGROUND: Incorporated in 1924 in MI.

PURPOSE AND ACTIVITIES: Challenge grants only for building construction or renovation projects, major capital equipment or an integrated system at a cost of at least \$300,000 (equipment costs may include computer software if applicable) and purchase of real estate; grants generally to tax-exempt institutions involved in higher education (awarding baccalaureate and/or graduate degrees), health and long-term care, human services, science and environment, arts and humanities, and public affairs. Full accreditation is required for higher education and hospital applicants. The foundation does not grant initial funds or total project costs; grants are for a portion of the costs remaining at the time of grant approval.

FIELDS OF INTEREST: Arts; Environment; Health care; Higher education; **Human services**; Humanities; Public affairs; Science.

GEOGRAPHIC FOCUS: National

TYPES OF SUPPORT: **Building/renovation**, Capital campaigns, Employee matching gifts, Equipment, Land acquisition, **Matching/challenge support**.

LIMITATIONS: No support for religious organizations, community colleges, private foundations, or elementary or secondary schools unless they predominantly serve individuals with physical and/or developmental disabilities. No grants to individuals, or for operating or special project budgets, furnishings, conferences, seminars, church building projects, endowment funds, student aid, scholarships, fellowships, research, debt retirement, completed projects, or general purposes; no loans.

APPLICATION INFORMATION: Application form required. Applicants should submit the following:

- 1) signature and title of chief executive officer
- 2) detailed description of project and amount of funding requested
- 3) brief history of organization and description of its mission
- 4) listing of board of directors, trustees, officers and other key people and their affiliations
- 5) timetable for implementation and evaluation of project
- 6) copy of most recent annual report/audited financial statement/990
- 7) copy of IRS Determination Letter
- 8) additional materials/documentation
- 9) listing of additional sources and amount of support
- 10) population served

Visits to the foundation offices may be scheduled at the initiation of the applicant. A telephone conference may also be arranged. Receipt of proposals is acknowledged.

Initial approach: Letter or telephone

Copies of proposal: 1

Deadline(s): None

Final notification: Generally within 5 months; decisions announced after each board meeting

FINANCIAL DATA: (yr. ended 12/31/99) Total giving, \$112,710,216; qualifying distributions, \$112,710,216; giving activities include \$112,412,428 for 217 grants (high: \$2,000,000; low: \$80,000; average: \$100,000-\$500,000) and \$297,788 for employee matching gifts.

EIN: 381359217

JOHN & MARIA LAFFIN TRUST

CONTACT: Derrith Chan, V.P. c/o Wells Fargo Bank 433 N. Camden Dr., Ste. 1200
Beverly Hills, CA 90210

TYPE OF GRANTMAKER: Independent foundation.

BACKGROUND: Established around 1989.

FIELDS OF INTEREST: AIDS; AIDS research; Animal welfare; **Children/youth, services;**
Higher education; Humanities; Medical research.

GEOGRAPHIC FOCUS: California

TYPES OF SUPPORT: **General/operating support,** Research, Scholarship funds.

LIMITATIONS: **Giving primarily in CA.** No grants to individuals.

APPLICATION INFORMATION: Application form not required.

Copies of proposal: 1

Board meeting date(s): June 30 and Dec. 31

Deadline(s): June 15

FINANCIAL DATA: (yr. ended 12/31/99) Total giving, \$391,478; qualifying distributions, \$412,505; giving activities include \$391,478 for 24 grants (high: \$97,037; low: \$2,500).

EIN: 946609731

LUDWICK FAMILY FOUNDATION

CONTACT: Patrick Bushman, Exec. V.P. or Joni Bailey, Grants Mgr. P.O. Box 1796
Glendora, CA 91740, Telephone: (626) 852-0092, FAX: (626) 852-0776

E-mail: ludwickfndn@ludwick.org
URL: <http://www.ludwick.org>

TYPE OF GRANTMAKER: Independent foundation.

BACKGROUND: Established in 1990 in CA.

PURPOSE AND ACTIVITIES: Giving primarily for health, human services, and the arts.

FIELDS OF INTEREST: Animal welfare; Arts; Children/youth, services; Civil rights, race/intergroup relations; **Community development**, neighborhood development; Environment; Environment, natural resources; **Family services**; Food services; Health care; Housing/shelter, services; Museums; Performing arts; Visual arts.

GEOGRAPHIC FOCUS: California

TYPES OF SUPPORT: **Building/renovation**, Equipment.

LIMITATIONS: Giving on a national basis, with emphasis on CA. No support for voter registration organizations, or to schools, universities, libraries, or hospitals (unless invited). No grants to individuals, or for salaries, general operating expenses, scholarships, endowment funds, fundraising, advertising, or for capital campaigns.

APPLICATION INFORMATION: Applicant invitees chosen from letters of inquiry received. Application form required.

Initial approach: Letter of inquiry

Copies of proposal: 1

Deadline(s): Aug. 1 and Jan. 15, Letters due Mar. 31 and Aug. 31

Final notification: Oct. 31 and Mar. 1

FINANCIAL DATA: (yr. ended 12/31/99) Total giving, \$430,000; qualifying distributions, \$546,931; giving activities include \$430,000 for 18 grants (high: \$48,000; low: \$5,000; average: \$5,000-\$50,000).

EIN: 954296315

MARY E. MOORE FAMILY FOUNDATION

CONTACT: Mary E. Moore, Pres. c/o Roth Bookstein & Zaslow , 11755 Wilshire Blvd., Ste. 900 Los Angeles, CA 90025; Application address: P.O. Box 10112, Fullerton, CA 92635-6112

TYPE OF GRANTMAKER: Independent foundation.

BACKGROUND: Established in 1985 in CA.

FIELDS OF INTEREST: **Family services**; Health care, patient services; Performing arts.

GEOGRAPHIC FOCUS: California

TYPES OF SUPPORT: **General/operating support.**

LIMITATIONS: Giving primarily in CA.

APPLICATION INFORMATION: Applicants should submit the following:

1) copy of IRS Determination Letter

Initial approach: Letter

Deadline(s): None

FINANCIAL DATA: (yr. ended 12/31/99) Total giving, \$30,000; qualifying distributions, \$30,000; giving activities include \$30,000 for grants.

EIN: 954021335

LLUELLA MOREY MURPHEY FOUNDATION

CONTACT: Alfred B. Hastings, Jr. P.O. Box 1419 La Quinta, CA 92253

TYPE OF GRANTMAKER: Independent foundation.

BACKGROUND: Established in 1967.

FIELDS OF INTEREST: Arts; **Children/youth, services**; Health care; Hospitals (general); **Human services.**

GEOGRAPHIC FOCUS: California

TYPES OF SUPPORT: **Building/renovation**, Endowments, Equipment, Fellowships, **General/operating support**, **Matching/challenge support**, Scholarship funds.

LIMITATIONS: Giving primarily in CA. No support for private foundations. No grants to individuals.

APPLICATION INFORMATION: Application form required.

Initial approach: Letter

Deadline(s): None

FINANCIAL DATA: (yr. ended 12/31/99) Total giving, \$146,140; qualifying distributions, \$205,162; giving activities include \$146,140 for 49 grants (high: \$5,000).
EIN: 956152669

NISSAN NORTH AMERICA, INC. CORPORATE GIVING PROGRAM

CONTACT: Kathy Bates, Community Rels. Coord. P.O. Box 191 Gardena, CA 90248-0191

Telephone: (310) 532-3111

URL: <http://www.nissan-na.com/1.0/1-1.html>

TYPE OF GRANTMAKER: Corporate giving program.

PURPOSE AND ACTIVITIES: As a complement to its foundation, Nissan also makes charitable contributions to nonprofit organizations directly. Support is given on a national basis.

FIELDS OF INTEREST: Arts; **Community development**; Education; Environment; General charitable giving; Safety, automotive safety; Science; **Youth development**.

GEOGRAPHIC FOCUS: National

TYPES OF SUPPORT: Employee matching gifts, Employee volunteer services, **General/operating support**.

LIMITATIONS: Giving on a national basis. No support for fraternal or veterans' organizations. No grants to individuals.

APPLICATION INFORMATION: The Community Relations and Public Affairs Department handles giving. Application form not required. Applicants should submit the following:

- 1) detailed description of project and amount of funding requested
- 2) copy of current year's organizational budget and/or project budget
- 3) copy of most recent annual report/audited financial statement/990
- 4) listing of board of directors, trustees, officers and other key people and their affiliations
- 5) copy of IRS Determination Letter

Initial approach: Proposal to headquarters

Copies of proposal: 1

Deadline(s): None

Final notification: Following review

THE DAVID AND LUCILE PACKARD FOUNDATION

CONTACT: (Prog. Off. of area of interest) 300 2nd St., Ste. 200 Los Altos, CA 94022
Telephone: (650) 948-7658
URL: <http://www.packfound.org>

TYPE OF GRANTMAKER: Independent foundation.

BACKGROUND: Incorporated in 1964 in CA.

PURPOSE AND ACTIVITIES: The foundation provides grants to nonprofit organizations in the following broad program areas: Science; Children, Families, and Communities; Population; Conservation; Arts; Organizational Effectiveness; and Philanthropy. National and international grants are provided, with a **special focus on the local northern California counties of San Mateo, Santa Clara, Santa Cruz, and Monterey.**

PROGRAM AREA(s): The grantmaker has identified the following area(s) of interest:

CFC: Child and Adolescent Development: The goal of this program subarea of the Children, Families, and Communities Program is to help prepare children and young people for school and for life. Grantmaking focuses on strategic investments to strengthen programs providing early care and education and to improve the quality of local area programs that offer developmental opportunities to older children.

CFC: Child Health: The goal of this program subarea is to promote the health of children by ensuring their access to high-quality health care services through health insurance and through a national child health care quality improvement initiative. *CFC: Child Health and Development:* The Children, Families, and Communities Program seeks to promote the health, development, and economic security of vulnerable children; to protect these children from violence; and to strengthen the capacity of families, communities, and the nation to care for all of America's children. Through this program, the foundation helps to develop, sustain, and disseminate efforts that benefit children.

CFC: Economic Security: The foundation seeks to help families move out of poverty by encouraging policies and practices that facilitate the transition from welfare to work and by supporting efforts that help working families escape poverty. Limited funding is also available to help maintain a safety net of food and emergency shelter services for families who live in San Mateo, Santa Clara, Santa Cruz, and Monterey Counties in northern California.

CFC: National Commitment: The goal of this program subarea is to make the well-being of children and families a priority in public decision making and community life. The foundation seeks to strengthen and extend the reach of organizations that are dedicated to children's issues and to harness the influence of business leaders, government officials, and private citizens on behalf of children.

FIELDS OF INTEREST: Africa; Arts; **Child development, services; Children/youth, services;** China; **Community development;** Economically disadvantaged; **Education, early childhood education;** Employment; Engineering/technology; Environment; Environment, natural resources; Health care; Health organizations; Homeless; Homeless, human services; Housing/shelter, development; Human services; India; Marine science; Mexico; Minorities; Pakistan; Performing arts; Performing arts, dance; Performing arts, music; Performing arts, theater; Philanthropy/voluntarism; Philippines; Population studies; Reproductive health, family planning; Science; **Urban/community development.**

GEOGRAPHIC FOCUS: National; international

TYPES OF SUPPORT: Capital campaigns, Conferences/seminars, Consulting services, Continuing support, Emergency funds, Employee matching gifts, Equipment, Fellowships, **General/operating support,** Internship funds, Land acquisition, **Matching/challenge support,** Professorships, Program development, Program evaluation, Program-related investments/loans, Research, Scholarship funds, **Seed money,** Technical assistance.

LIMITATIONS: Giving for the arts and **community development** primarily in Santa Clara, San Mateo, Santa Cruz, and **Monterey Counties, CA,** with some support also in the Pueblo, CO, area; national giving for child health and development; national and international giving for population and the environment. No support for religious purposes. No grants to individuals.

APPLICATION INFORMATION: Application form not required. Applicants should submit the following:

- 1) detailed description of project and amount of funding requested
- 2) name, address and phone number of organization
- 3) brief history of organization and description of its mission
- 4) contact person
- 5) statement of problem project will address
- 6) population served
- 7) geographic area to be served
- 8) timetable for implementation and evaluation of project
- 9) results expected from proposed grant
- 10) qualifications of key personnel
- 11) how project's results will be evaluated or measured
- 12) listing of board of directors, trustees, officers and other key people and their affiliations
- 13) copy of current year's organizational budget and/or project budget
- 14) copy of most recent annual report/audited financial statement/990
- 15) copy of IRS Determination Letter
- 16) listing of additional sources and amount of support
- 17) additional materials/documentation

Initial approach: Proposal or 2- to 3-page letter of inquiry

Copies of proposal: 1

Deadline(s): Mar. 15, June 15, Sept. 15, and Dec. 15

Final notification: 2 weeks after board meetings

FINANCIAL DATA (yr. ended 12/31/99) Total giving, \$391,568,231; qualifying distributions, \$463,762,288; giving activities include \$391,534,914 for 2,002 grants (high: \$31,353,087; average: \$1,000-\$31,353,087), \$33,317 for 138 employee matching gifts, \$11,773,294 for 3 foundation-administered programs and \$32,935,888 for 8 program-related investments.
EIN: 942278431

SELECTED GRANTS: The following grants were reported in 1999.

- \$49,050,668 to Monterey Bay Aquarium Research Institute (MBARI), Moss Landing, CA for 2 grants: \$31,353,087 (For operating and capital support in 2000), \$17,697,581 (For capital projects).
- \$25,000,000 to Stanford University, Office of the President, Stanford, CA, For Campaign for Undergraduate Education. This grant is to be allocated for following purposes: \$10 million for endowed scholarship program, \$9 million for introductory seminars, \$3 million for human biology, and \$3 million for diversity and pipeline program, payable over 5 years.
- \$17,500,000 to Nature Conservancy, California Regional Office, San Francisco, CA for 3 grants: \$7,500,000 (For Conserving Landscapes of San Luis Obispo County: Launching Plan Project), \$7,000,000 (For conservation of Mt. Hamilton region), \$3,000,000 (For adaptive management program as part of 42-mile restoration program that includes decommissioning of five dams on Battle Creek).
- \$6,000,000 to Energy Foundation, San Francisco, CA, For Climate Change and China Sustainable Energy Programs.
- \$5,250,000 to Peninsula Open Space Trust, Menlo Park, CA, For acquisition of Rancho Canada de Oro and other key parcels in San Mateo and Santa Clara Counties.
- \$5,000,000 to Audubon Society, National, New York, NY, To establish national network of 1,000 Audubon Centers, payable over 2 years.
- \$5,000,000 to Nature Conservancy, San Francisco, CA, For acquisition of Palmyra, Pacific atoll.

TIDES FOUNDATION

CONTACT: Idelisse Malave, Exec. Dir.; or Karie Brown, Dir., Prog.; Presidio Main Post, Bldg. No. 37 P.O. Box 29903 San Francisco, CA 94129-0903 Telephone: (415) 561-6400
URL: <http://www.tides.org>

TYPE OF GRANTMAKER: Public charity.

BACKGROUND: Established in 1976.

PURPOSE AND ACTIVITIES: The foundation gives primarily in the areas of the environment and natural resources, international affairs; economic public policy and enterprise development, social justice, and community affairs.

FIELDS OF INTEREST: AIDS; **Community development**; Community development, citizen coalitions; **Community development, civic centers**; Economic development; Economically disadvantaged; Economics; Environment; Environment, natural resources; Gays/lesbians; International affairs; Media/communications; Minorities; Native Americans/American Indians; Public policy, research; Reproductive health; Women; **Youth development, services.**

GEOGRAPHIC FOCUS: National; international

TYPES OF SUPPORT: Annual campaigns, Continuing support, **General/operating support**, Land acquisition, **Matching/challenge support**, Program development, Publication, Research, **Seed money**, Technical assistance.

LIMITATIONS: Giving primarily on a national basis with some international giving. No grants to individuals.

APPLICATION INFORMATION: Accepts NNG Common Application Form.

Initial approach: Letter of inquiry; cover sheet

Deadline(s): June 7 and Nov. 7

FINANCIAL DATA: Total giving, \$21,004,902; program services expenses, \$22,609,643; giving activities include \$20,984,902 for 1,500 grants (high: \$400,000; low: \$50), \$20,000 for 4 grants to individuals and \$2,373,577 for 18 program-related investments.
EIN: 510198509

UNION BANK OF CALIFORNIA FOUNDATION

CONTACT: Bob McNeely, Union Bank of California, N.A.
400 California St., No. 95-91 San Francisco, CA 94104 Telephone: (415) 230-4592
Application address: P.O. Box 109, San Diego, CA 92112

TYPE OF GRANTMAKER: Company-sponsored foundation.

BACKGROUND: Trust established in 1953 in CA.

PURPOSE AND ACTIVITIES: Giving for health, welfare, youth and civic activities.

FIELDS OF INTEREST: Arts; Arts, cultural/ethnic awareness; **Children/youth, services**; **Community development**, neighborhood development; Education; Federated giving programs; Higher education; Hospitals (general); **Human services**; Museums; Performing arts; YM/YWCAs & YM/YWHAs.

GEOGRAPHIC FOCUS: California

TYPES OF SUPPORT: Annual campaigns, **Building/renovation**, Continuing support, Emergency funds, Employee matching gifts, Equipment, **General/operating support**, **Program development**.

LIMITATIONS: Giving primarily in CA, with emphasis on areas of company operations. No support for religious or political organizations. No grants to individuals, or for endowment funds, scholarships, fellowships, or research; no loans.

APPLICATION INFORMATION: Application form not required. Applicants should submit the following:

- 1) detailed description of project and amount of funding requested
- 2) copy of current year's organizational budget and/or project budget
- 3) brief history of organization and description of its mission
- 4) copy of IRS Determination Letter

Initial approach: Proposal

Copies of proposal: 1

Board meeting date(s): Monthly

Deadline(s): Submit proposal preferably in Jan.; no set deadline

Final notification: 3 months

FINANCIAL DATA: (yr. ended 12/31/99) Total giving, \$3,156,843; qualifying distributions, \$3,155,622; giving activities include \$3,156,843 for 125 grants (high: \$247,473; low: \$1,000; average: \$5,000-\$25,000).

EIN: 956023551

SELECTED GRANTS: The following grants were reported in 1999.

- \$276,532 to United Way of the Bay Area, San Francisco, CA for 3 grants: \$135,694, \$73,881 (For third payment of grant for United Way Campaign), \$66,957.
- \$125,000 to Music Center of Los Angeles County, Los Angeles, CA, For final payment of pledge for Disney Hall.
- \$100,000 to Asian Art Museum of San Francisco, San Francisco, CA.
- \$90,000 to K Q E D, San Francisco, CA for 2 grants: \$50,000 (For Black History Month program), \$40,000 (For Asian Heritage Month program).
- \$65,000 to K C E T Community Television of Southern California, Los Angeles, CA, For Hispanic Heritage Month program.
- \$50,000 to Weingart Center Association, Los Angeles, CA.
- \$35,000 to Art Walk, San Diego, CA.

THE UPJOHN CALIFORNIA FUND

CONTACT: Cynthia W. Hertlein, Pres. P.O. Box 90 Carmel Valley, CA 93924

TYPE OF GRANTMAKER: Independent foundation.

BACKGROUND: Incorporated in 1955 in CA.

PURPOSE AND ACTIVITIES: Giving for natural history, animal welfare, youth assistance programs, education, health and community services, civic and cultural institutions, and hospitals.

FIELDS OF INTEREST: Arts; **Children/youth, services**; Disabled; Education; Environment; Environment, natural resources; **Family services**; Hospitals (general); Medical research; Secondary school/education.

GEOGRAPHIC FOCUS: California

TYPES OF SUPPORT: **Building/renovation**, Capital campaigns, Continuing support, Emergency funds, Equipment, **General/operating support**.

LIMITATIONS: Giving primarily in the CA central coast area. No grants to individuals.

APPLICATION INFORMATION: San Francisco Bay, CA area organizations should address grant requests to the Upjohn Fund of San Francisco rather than to the Upjohn California Fund. Inappropriate requests for funds not acknowledged.

Application form not required.

Initial approach: Letter

Copies of proposal: 1

Board meeting date(s): June and Oct.

Deadline(s): Aug. 30

FINANCIAL DATA: (yr. ended 10/31/99) Total giving, \$80,500; qualifying distributions, \$95,448; giving activities include \$80,500 for 57 grants (high: \$4,000; low: \$500).

EIN: 946065219

Selected grants: The following grants were reported in 1999.

- \$4,000 to Natividad Medical Foundation, Salinas, CA.
- \$3,000 to Community Partnership for Youth, Monterey, CA.
- \$2,500 to Carmel Middle School, Carmel, CA, For habitat project.
- \$2,000 to Lyceum of Monterey County, Monterey, CA.
- \$2,000 to Meals on Wheels of Salinas, Salinas, CA.
- \$1,500 to Youth Music Monterey, Monterey, CA.
- \$1,000 to Center for Photographic Art, Carmel, CA.
- \$1,000 to Pacific Grove Museum of Natural History, Pacific Grove, CA.
- \$500 to Audubon Canyon Ranch, Stinson Beach, CA.
- \$500 to California Grey Bears, Santa Cruz, CA.

WENDER-WEIS FOUNDATION FOR CHILDREN

CONTACT: Amy Wender, Pres. 555 Bryant St., Ste. 300 Palo Alto, CA 94301
Telephone: (650) 321-4142 , FAX: (650) 321-6287
URL: <http://www.wenderweis.org>

TYPE OF GRANTMAKER: Independent foundation.

BACKGROUND: Established in 1994 in CA.

PURPOSE AND ACTIVITIES: Giving for children and youth services.

FIELDS OF INTEREST: Athletics/sports, training; **Children/youth, services; Youth development, adult & child programs.**

GEOGRAPHIC FOCUS: California

TYPES OF SUPPORT: Annual campaigns, Capital campaigns, Conferences/seminars, Continuing support, Endowments, **General/operating support**, Research, **Scholarship funds, Seed money.**

LIMITATIONS: Giving primarily in CA. No grants to individuals.

APPLICATION INFORMATION: Application form not required.

Initial approach: Letter

Copies of proposal: 2

Board meeting date(s): Mar. and Sept.

Deadline(s): None

FINANCIAL DATA: (yr. ended 08/31/99) Total giving, \$82,100; qualifying distributions, \$129,220; giving activities include \$82,100 for 13 grants (high: \$30,000; low: \$175).
EIN: 770381972

SELECTED GRANTS: The following grants were reported in 1999.

- \$30,000 to Giants Community Service Fund, San Francisco, CA, For programs for underprivileged children.
- \$15,225 to Bay Area Ballers, Redwood City, CA, For programs for underprivileged children.
- \$10,000 to National Association of Athletes Against Drugs, Long Beach, CA, For programs for underprivileged children.
- \$10,000 to Trust for Hidden Villa, Los Altos Hills, CA, For programs for underprivileged children.
- \$5,000 to American Sports Institute, Mill Valley, CA, For programs for underprivileged children.

- \$3,500 to Elizabeth Glaser Pediatric AIDS Foundation, Santa Monica, CA, For programs for underprivileged children.
- \$2,500 to Taylor Family Foundation, Lafayette, CA, For programs for underprivileged children.
- \$1,500 to Davis Street Community Center, San Leandro, CA, For programs for underprivileged children.
- \$1,200 to Community Impact, Palo Alto, CA, For programs for underprivileged children.
- \$1,000 to San Jose Shelter Foundation, San Jose, CA, For programs for underprivileged children.

YOUTH DEVELOPMENT FOUNDATION

CONTACT: Jennifer Randall, Tr. 2005 Eye St., No. 8 Bakersfield, CA 93301

TYPE OF GRANTMAKER: Independent foundation.

BACKGROUND: Established in 1953 in CA.

FIELDS OF INTEREST: Animal welfare; **Child development, education; Child development, services;** Education; Environment; Higher education; Medical research; Performing arts; Performing arts, dance; **Youth, services.**

GEOGRAPHIC FOCUS: California

TYPES OF SUPPORT: **General/operating support, Program development, Scholarship funds.**

LIMITATIONS: Giving primarily in CA. No grants to individuals.

APPLICATION INFORMATION: Application form not required.

Initial approach: Letter

Copies of proposal: 2

Board meeting date(s): Mar.

Deadline(s): None

Final notification: Feb.; positive responses only

FINANCIAL DATA: Total giving, \$111,206; qualifying distributions, \$114,275; giving activities include \$111,206 for 58 grants (high: \$33,000; low: \$300; average: \$500-\$2,000).

EIN: 956087405

5.3 Federal and State Sources (Public)

COMMUNITY DEVELOPMENT BLOCK GRANTS (CDBG) SMALL CITIES PROGRAM

FEDERAL AGENCY: Community Planning and Development, Department of Housing and Urban Development.

OBJECTIVES: The primary objective of this program is the development of viable urban communities by providing decent housing, a suitable living environment, and expanding economic opportunities, principally for persons of low and moderate income.

TYPES OF ASSISTANCE: Project Grants.

USES AND USE RESTRICTIONS: Small Cities develop their own programs and funding priorities. Generally, as in the case of entitlement grants, most activities previously eligible under the categorical program consolidated under the Act, and defined by the statute and regulations may be carried out, i.e., acquisition, rehabilitation or construction of certain public works facilities and improvements, clearance, housing rehabilitation, code enforcement, direct assistance to facilitate and expand Home ownership among persons of low and moderate income, relocation payments and assistance, administrative expenses, economic development, completing existing urban renewal projects, and certain public services within certain limits. Neighborhood-based nonprofit organizations, local development corporations, Small Business Investment Companies, or other nonprofit organizations serving the development needs of non-entitlement areas may act as subgrantees to carry out neighborhood revitalization or community economic development projects in furtherance of block grant objectives. Recipients may provide assistance to for-profit entities when the recipient determines that the provision of such assistance is appropriate to carry out an economic development project. Communities are restricted from constructing or rehabilitating public facilities for the general conduct of government and from making housing allowances or other income maintenance-type payments. The projected use of funds must be developed to give maximum feasible priority to activities which benefit low and moderate income persons or aid in the prevention or elimination of slums or blight. The projected use of funds may also include activities which the applicant certifies are designed to meet other community development needs having a particular urgency because existing conditions pose a serious and immediate threat to the health or welfare of the community where other financial resources are not available to meet such needs. At least 70 percent of each grant made available to a unit of general local government must benefit low and moderate income persons.

APPLICANT ELIGIBILITY: Eligible applicants are units of general local government (including counties), except metropolitan cities, urban counties or units participating in an urban county's CDBG program, and Indian tribes eligible for assistance under Section 106(a) of the Act, as amended. Under the CDBG Program/State Program (14.228) each State may now elect to administer all aspects of the Small Cities Program for the non-entitlement communities within its jurisdiction. All other States have elected to administer the Small Cities Program.

CONTACTS: State of California, Department of Housing and Community Development, Community Development Block Grant Program, 1800 Third Street, Room 390, Sacramento CA 94814. Telephone: (916) 445-6000; State and Small Cities Division, Office of Block Grant Assistance, Community Planning and Development, Department of Housing and Urban Development, 451 7th Street, S.W., Washington, DC 20410. Telephone: (202) 708-1322.

EXAMPLES OF FUNDED PROJECTS: Neighborhood revitalization projects emphasizing rehabilitation of private homes, and including appropriate improvements of public facilities; economic development projects for expanded employment opportunities; and projects to address serious deficiencies in public facilities such as water and sewer.

COMMUNITY FACILITIES LOANS AND GRANTS

FEDERAL AGENCY: Rural Housing Service (RHS), Department of Agriculture

OBJECTIVES: To construct, enlarge, extend, or otherwise improve community facilities providing essential services to rural residents.

TYPES OF ASSISTANCE: Direct Loans; Guaranteed/Insured Loans; Project Grants.

USES AND USE RESTRICTIONS: Community facilities include but are not limited to those providing or supporting overall community development such as fire and rescue services, transportation, community, social, cultural, and health benefits: industrial park sites, access ways, and utility extensions. All facilities financed in whole or in part with RHS funds shall be for public use.

APPLICANT ELIGIBILITY: City, County, and State agencies, political and quasi-political subdivisions of States and associations including corporations, Indian tribes on Federal and State reservations and other Federally Recognized Indian tribes and existing private corporations which: (1) Are operated on a not-for-profit basis; (2) have or will have the legal authority necessary for constructing, operating, and maintaining the proposed facility or service and for obtaining, giving security for, and repaying the loan; and (3) are unable to finance the proposed project from its own resources or through commercial credit at reasonable rates and terms. Assistance is authorized for eligible applicants in rural areas of the States, Puerto Rico, the Virgin Islands, Guam, American Samoa, the commonwealth of the Northern Mariana Islands, the Marshall Islands, the Republic of Palaw, and the Federated States of Micronesia.

CONTACTS: Director, Community Facilities Division, Rural Housing Service, Department of Agriculture, Washington, DC 20250-3222. Telephone: (202) 720-1490.

EXAMPLES OF FUNDED PROJECTS: Loans were made to: (1) Establish rural health clinics in medically underserved areas; (2) purchase fire fighting equipment for rural towns; (3) construct

new municipal buildings; (4) build new schools to serve rural counties; and (5) renovate hospitals to meet current life/safety codes.

SOCIAL SERVICES BLOCK GRANT (Social Services)

FEDERAL AGENCY: Administration for Children and Families, Department of Health and Human Services

OBJECTIVES: To enable each State to furnish social services best suited to the needs of the individuals residing in the State Federal block grant funds may be used to provide services directed toward one of the following five goals specified in the law: (1) to prevent, reduce, or eliminate dependency; (2) to achieve or maintain self-sufficiency; (3) to prevent neglect, abuse, or exploitation of children and adults; (4) to prevent or reduce inappropriate institutional care; and (5) to secure admission or referral for institutional care when other forms of care are not appropriate.

TYPES OF ASSISTANCE: Formula Grants

USES AND USE RESTRICTIONS: Federal funds may be used by States for the proper and efficient operation of social service programs. Except for items (1) and (4) below, for which a waiver from the Secretary may be requested, Federal funds cannot be used for the following: (1) the purchase or improvement of land, or the purchase, construction, or permanent improvement of any building or other facility; (2) the provision of cash payments for costs of subsistence or the provision of room and board (other than costs of subsistence during rehabilitation, room and board provided for a short term as an integral but subordinate part of a social service, or temporary shelter provided as a protective service); (3) the payment of wages to any individual as a social service (other than payment of wages to welfare recipients employed in the provision of child day care services); (4) the provision of medical care (other than family planning services, rehabilitation services or initial detoxification of an alcoholic or drug dependent individual) unless it is an integral but subordinate part of a social service for which grants may be used; (5) social services (except services to an alcoholic or drug dependent individual or rehabilitation services) provided in and by employees of any hospital, skilled nursing facility, intermediate care facility, or prison, to any individual living in such institution; (6) the provision of any educational service which the State makes generally available to its residents without cost and without regard to their income; (7) any child day care service unless such service meets applicable standards of State and local law; (8) the provision of cash payments as a service; or (9) for payment for any item or service (other than an emergency item or service) furnished by an individual or entity during the period when such individual or entity is excluded pursuant to Section 1128 or Section 1128(A) of the Social Security Act from participation in this program; or at the medical direction or on the prescription of a physician during the period when the physician is excluded based on Section 1128 or 1128(A) from participation in the program and when the person furnishing such item or service knew or had reason to know of the exclusion (after a reasonable time period after reasonable notice has been furnished to the person). A State may transfer up to 10 percent of its allotment for any fiscal year to the preventive health and

health services, alcohol and drug abuse, mental health services, maternal and child health services, and low-income home energy assistance block grants.

APPLICANT ELIGIBILITY: The 50 States, the District of Columbia, Puerto Rico, Guam, the Virgin Islands, the Commonwealth of the Northern Mariana Islands, and American Samoa.

CONTACTS: Office of Community Services, Division of State Assistance, 370 L'Enfant Promenade, SW., Washington, DC 20447. Telephone: (202) 401-2333.

EXAMPLES OF FUNDED PROJECTS: States and other eligible jurisdictions determine their own social services programs. Examples of funded services include child day care, protective and emergency services for children and adults, homemaker and chore services, information and referral, adoption, foster care, counseling, and transportation.

ROBERTI-Z'BERG HARRIS (RZH) GRANT PROGRAM

AGENCY: State of California, Department of Parks and Recreation

OBJECTIVE: The Roberti-Z'Berg Harris (RZH) Grant Program is intended to meet the urgent need for safe, open and accessible, local parks and recreational facilities for increased recreational opportunities that provide positive alternatives to social problems.

TYPES OF ASSISTANCE: Formula Grants

USE AND USE-RESTRICTIONS: Eligible projects include: Acquisition of open space areas; development/rehabilitation of park or recreational facilities; preservation, rehabilitation or restoration of historic sites or structures (if they are in a park recreation area that provides expanded or additional recreational or historical opportunities); special major maintenance that will reduce energy requirements to operate recreational land or facilities; innovative recreation programs that responds to a unique and otherwise unmet recreational need of senior citizens, physically, or emotionally disabled, chronic or new poor, single parents, latchkey children, and minorities, or other special populations.

CONTACTS: State of California, Department of Parks and Recreation, Office of Grants and Local Services, 1416 9th Street, P.O. Box 942896, Sacramento, CA 94296-0001 (916) 653-7423.

5.4 Study Recommendations

5.4.1 General

As described in this assessment, the City of Gonzales lacks sufficient resources in the areas of education, childcare, senior citizens, family services, and social/recreational services. A general use, multi-purpose facility of approximately 20,000 square feet containing at minimal, meeting rooms/classrooms, and multi-purpose room(s) should be sufficient to address these needs. Additional and/or any specific needs that should arise, may be incorporated into the final working plans and design.

5.4.2 Funding Sources

Connerly & Associates recommends that the City apply to the California Department of Housing and Community Development for a Community Development Block Grant (CDBG) of \$500,000. Community facilities are an eligible activity and considering the City's social and economic characteristics, demonstrable need for services, and ability to assist low-income families, a CDBG application should be very competitive. Applications are typically accepted in April of each year.

In addition to CDBG, Connerly & Associates recommends that the City apply for private funding. The service/activity needs analysis (Section 2 of this report) describes the lack of services in Gonzales, primarily due to inadequate space and meeting area. The S.H. Cowell foundation's focus on family resource centers (FRCs), fits the City's need described in this assessment. A Family Resource Center in Gonzales could offer a hub of services that include education, childcare, family resources and referrals, youth development and other needed community development activities. Grants range between \$1,000 and \$300,000, with proposals reviewed monthly.

The Kresge Foundation provides challenge grants for building construction through their Bricks and Mortar Program. Recent grant awards have ranged between \$150,000 - \$600,000. Typically, competitive proposals request grant amounts ranging from one-fifth to one-third of the balance that must be raised to complete the campaign after the Board's decision. The foundation will accept proposals throughout the year, but only one per institution in any twelve-month period. A decision is reached generally four to six months after an application is submitted and grants are normally approved four times a year in March, June, September, and December. Application information can be found in *Section 5.2* of this report.

5.4.3 Site Selection

The site located near Gloria Road and Harold Parkway, would be most suitable for a new facility. City has designated adjacent sites for the construction of a new school and library. The site could accommodate future expansion and provides adequate space for parking. In addition, a community facility would be consistent in the area, with proximity to the new school and library. There is no immediate infrastructure, however should the City proceed with plans to

build a new school and library, infrastructure for the site would be available. Visibility from Highway 101 is good. Although this may not provide an immediate benefit to Gonzales residents, a well-designed facility could serve as an identifiable marker for the City in addition to its water tower. Currently there is no street access to the site. This too will be addressed when the school and library are constructed. Transportation to this site may be problematic for residents who live near Gonzales' downtown area where the current community center is located, however, this would balance the number of public facilities available to residents living near the City's historically downtown core and residents living in the newer housing developments.

6. APPENDICES

APPENDIX A:..... Preliminary Design Plan
APPENDIX B:..... Cost Estimate
APPENDIX C:..... Photos of Existing Community Center
APPENDIX D:..... List of Sources

APPENDIX A: Preliminary Design Plan

(See attached page)

